

More Graduates Discussion
June 17 Provost Retreat
Information Packet

- 1) Retention and Graduation Rates
 - a. New Freshmen Entering Full-Time in Fall
 - i. Retained to the Second Year
 - ii. Graduating within 4 Years
 - iii. Graduating within 6 Years
 - iv. Retention (2nd, 3rd, 4th) and Graduation (4-yr, 5-yr, 6-yr)
 - b. New Transfers Entering Full-Time in Fall
 - i. Retained to the Second Year
 - ii. Graduating within 4 Years
 - iii. Graduating within 6 Years
 - c. New Freshmen or New Transfers Entering in Spring or Part-Time in Fall
 - i. Retained to the Second Year
 - ii. Graduating within 4 Years
 - iii. Graduating within 6 Years
- 2) Closing the Achievement Gap of Underrepresented Minorities
 - a. % of Enrollment
 - b. Retention Rate Gap
 - c. Graduation Rate Gap
 - d. % of Degrees Conferred
- 3) Leading Indicators
 - a. New Freshmen Entering Full-Time in Fall
 - i. % Began College Level Math in 1st Year
 - ii. % Began College Level English in 1st Year
 - iii. % Attempted More Than 24 Credits in 1st Year
 - iv. % Retained to 2nd Year
 - b. New Freshmen Needing Remediation: Completion by Year
 - i. Math
 - ii. English
 - c. Annual Course Drop Rates for Undergraduates

Part 1 Retention and Graduation Rates

**New Freshmen Entering Full-Time in Fall
and Retained to the Second Year at the Same Institution**

UW		Fall 2006		Fall 2007		Fall 2008		3 Year Total		Fall 2015	
		Cohort	Retained	Cohort	Retained	Cohort	Retained	Cohort	Retained	Cohort	Retained
UW-Eau Claire	Overall	2,020	82.4%	2,026	84.7%	2,052	85.7%	6,098	84.3%	1,891	86.0%
	URM	81	81.5%	91	83.5%	99	76.8%	271	80.4%	120	84.0%
	Pell	285	81.1%	315	82.9%	295	82.7%	895	82.2%	340	84.6%
UW-Green Bay	Overall	1,019	75.1%	987	72.4%	1,000	74.4%	3,006	74.0%	1,088	77.3%
	URM	64	68.8%	55	76.4%	67	77.6%	186	74.2%	167	76.6%
	Pell	203	75.9%	224	68.8%	205	74.6%	632	72.9%	222	77.3%
UW-La Crosse	Overall	1,751	87.0%	1,750	86.2%	1,779	83.9%	5,280	85.7%	1,755	84.5%
	URM	77	87.0%	92	82.6%	102	75.5%	271	81.2%	100	83.1%
	Pell	260	84.2%	262	82.4%	264	81.1%	786	82.6%	263	83.1%
UW-Madison	Overall	5,633	93.2%	5,980	93.6%	5,759	93.8%	17,372	93.5%	6,149	94.7%
	URM	541	89.5%	586	93.2%	575	91.1%	1,702	91.3%	465	93.6%
	Pell	540	90.2%	599	91.2%	576	91.3%	1,715	90.9%	1,021	93.5%
UW-Milwaukee	Overall	3,977	71.8%	4,465	69.2%	4,002	73.3%	12,444	71.3%	3,985	77.8%
	URM	531	62.3%	621	61.7%	668	66.2%	1,820	63.5%	785	73.3%
	Pell	747	67.5%	918	67.5%	861	70.7%	2,526	68.6%	997	76.6%
UW-Oshkosh	Overall	1,726	73.5%	1,723	76.9%	1,807	75.8%	5,256	75.4%	1,902	78.0%
	URM	119	64.7%	112	78.6%	161	72.0%	392	71.7%	238	78.0%
	Pell	333	69.7%	315	76.8%	354	74.9%	1,002	73.8%	380	78.0%
UW-Parkside	Overall	814	60.1%	833	66.4%	833	64.3%	2,480	63.6%	990	67.8%
	URM	198	51.0%	192	59.4%	238	63.9%	628	58.4%	222	64.6%
	Pell	248	58.5%	276	58.7%	284	65.5%	808	61.0%	337	67.8%
UW-Platteville	Overall	1,387	75.2%	1,466	74.8%	1,468	74.0%	4,321	74.6%	1,552	76.4%
	URM	76	60.5%	64	57.8%	77	62.3%	217	60.4%	123	69.9%
	Pell	308	70.5%	363	73.0%	341	69.5%	1,012	71.0%	371	74.2%
UW-River Falls	Overall	1,289	75.0%	1,276	73.5%	1,332	74.9%	3,897	74.5%	1,425	77.4%
	URM	66	71.2%	62	54.8%	70	62.9%	198	63.1%	69	71.6%
	Pell	272	75.4%	303	65.3%	295	72.9%	870	71.0%	316	76.4%
UW-Stevens Point	Overall	1,640	76.0%	1,611	75.3%	1,608	78.4%	4,859	76.5%	1,634	82.0%
	URM	62	67.7%	97	77.3%	102	72.5%	261	73.2%	132	79.8%
	Pell	291	75.3%	337	73.3%	314	83.4%	942	77.3%	310	82.0%
UW-Stout	Overall	1,507	69.6%	1,489	71.8%	1,633	71.0%	4,629	70.8%	1,667	72.5%
	URM	72	65.3%	71	69.0%	97	64.9%	240	66.3%	100	70.6%
	Pell	301	65.4%	307	71.7%	315	67.0%	923	68.0%	345	70.5%
UW-Superior	Overall	293	62.5%	343	65.9%	303	71.6%	939	66.7%	386	72.0%
	URM	13	53.8%	14	50.0%	15	80.0%	42	61.9%	15	62.0%
	Pell	77	57.1%	92	67.4%	77	77.9%	246	67.5%	99	70.0%
UW-Whitewater	Overall	1,780	77.0%	2,048	76.1%	2,132	78.0%	5,960	77.0%	2,146	79.3%
	URM	129	76.0%	197	62.9%	203	72.4%	529	69.8%	230	75.3%
	Pell	269	73.2%	373	68.9%	362	76.5%	1,004	72.8%	450	78.6%
UW System*	Overall	24,836	79.2%	25,997	79.3%	25,708	80.2%	76,541	79.6%	26,569	82.2%
	URM	2,029	71.8%	2,254	73.2%	2,474	73.8%	6,757	73.0%	2,765	78.8%
	Pell	4,134	73.8%	4,684	73.7%	4,543	76.1%	13,361	74.5%	5,452	80.2%
UW Colleges*	Overall	3,565	57.1%	3,644	56.8%	3,663	57.9%	10,872	57.3%	4,710	62.0%
	URM	174	49.4%	246	58.5%	295	51.2%	715	53.3%	432	62.0%
	Pell	759	59.6%	932	58.4%	913	59.5%	2,604	59.1%	1,178	62.0%

*UW System includes four-year institutions only. UW Colleges is reported separately from the UW System total to reflect UW Colleges' primary mission of transfer to four-year institutions.

Note: URM (Under-represented Minorities) includes African American, American Indian, Southeast Asian, Hispanic/Latino, and Two or More Races.

Part 1

Retention and Graduation Rates

New Freshmen Entering Full-Time in Fall
and Graduating within 4 Years at the Same Institution

UW		Fall 2003		Fall 2004		Fall 2005		3 Year Total		Fall 2015	
		Cohort	Grad w/in 4	Cohort	Grad w/in 4	Cohort	Grad w/in 4	Cohort	Grad w/in 4	Cohort	Grad w/in 4
UW-Eau Claire	Overall	1,869	25.4%	2,026	25.7%	2,063	23.5%	5,958	24.8%	1,891	32.5%
	URM	59	20.3%	58	17.2%	65	20.0%	182	19.2%	120	30.4%
	Pell	322	20.8%	299	20.1%	277	17.0%	898	19.4%	340	29.4%
UW-Green Bay	Overall	960	25.1%	989	23.1%	904	21.9%	2,853	23.4%	1,088	24.1%
	URM	47	12.8%	54	***	43	***	144	9.0%	167	18.3%
	Pell	196	19.4%	235	19.1%	175	18.3%	606	19.0%	222	22.3%
UW-La Crosse	Overall	1,506	33.7%	1,539	32.4%	1,755	33.0%	4,800	33.0%	1,755	36.0%
	URM	69	21.7%	62	16.1%	84	17.9%	215	18.6%	100	28.8%
	Pell	233	30.0%	228	23.7%	242	24.4%	703	26.0%	263	31.7%
UW-Madison	Overall	5,553	48.4%	5,617	49.7%	6,118	51.9%	17,288	50.1%	6,149	53.0%
	URM	416	31.3%	487	26.7%	531	28.4%	1,434	28.7%	465	41.4%
	Pell	618	35.1%	643	32.0%	559	32.7%	1,820	33.3%	1,021	44.1%
UW-Milwaukee	Overall	3,716	14.9%	3,714	14.9%	4,218	14.3%	11,648	14.7%	3,985	15.3%
	URM	495	4.6%	517	4.1%	612	3.6%	1,624	4.1%	785	10.6%
	Pell	712	8.7%	748	8.0%	782	6.9%	2,242	7.9%	997	11.8%
UW-Oshkosh	Overall	1,765	14.8%	1,708	14.6%	1,617	14.5%	5,090	14.6%	1,902	16.6%
	URM	91	9.9%	91	***	107	***	289	6.2%	238	11.5%
	Pell	336	11.3%	376	13.6%	272	8.8%	984	11.5%	380	15.5%
UW-Parkside	Overall	863	7.9%	890	9.8%	783	7.8%	2,536	8.5%	990	11.3%
	URM	135	***	188	4.3%	178	3.9%	501	4.0%	222	9.4%
	Pell	213	6.1%	244	6.6%	221	5.4%	678	6.0%	337	10.1%
UW-Platteville	Overall	1,116	18.2%	1,164	17.6%	1,218	15.4%	3,498	17.0%	1,552	15.9%
	URM	21	***	33	***	38	***	92	9.8%	123	13.2%
	Pell	278	17.6%	282	23.8%	266	12.8%	826	18.2%	371	14.6%
UW-River Falls	Overall	1,220	25.0%	1,197	26.0%	1,192	22.5%	3,609	24.5%	1,425	29.5%
	URM	80	12.5%	81	14.8%	57	***	218	11.9%	69	24.3%
	Pell	304	23.4%	262	23.7%	255	12.5%	821	20.1%	316	24.5%
UW-Stevens Point	Overall	1,498	22.4%	1,525	21.1%	1,521	24.0%	4,544	22.5%	1,634	26.0%
	URM	72	13.9%	66	16.7%	52	***	190	13.7%	132	21.0%
	Pell	345	16.8%	309	18.1%	266	21.8%	920	18.7%	310	24.9%
UW-Stout	Overall	1,267	19.3%	1,277	19.9%	1,699	19.0%	4,243	19.3%	1,667	21.1%
	URM	39	***	52	11.5%	84	9.5%	175	9.1%	100	16.2%
	Pell	271	17.7%	277	13.4%	319	16.6%	867	15.9%	345	20.0%
UW-Superior	Overall	336	19.6%	329	16.4%	336	18.2%	1,001	18.1%	386	19.0%
	URM	11	***	14	***	10	***	35	2.9%	15	9.9%
	Pell	112	9.8%	111	12.6%	67	11.9%	290	11.4%	99	18.9%
UW-Whitewater	Overall	1,825	25.2%	1,745	24.5%	1,701	25.7%	5,271	25.1%	2,146	27.5%
	URM	195	9.7%	234	9.4%	159	10.1%	588	9.7%	230	19.6%
	Pell	351	19.4%	362	17.7%	308	16.2%	1,021	17.8%	450	22.9%
UW System*	Overall	23,494	27.3%	23,720	27.4%	25,125	27.8%	72,339	27.5%	26,569	29.8%
	URM	1,730	14.2%	1,937	12.3%	2,020	12.6%	5,687	13.0%	2,765	22.6%
	Pell	4,291	18.9%	4,376	18.1%	4,009	16.1%	12,676	17.7%	5,452	24.1%
UW Colleges**	Overall	3,784	5.0%	3,755	5.1%	3,588	4.7%	11,127	4.9%	4,710	n/a
	URM	119	***	168	***	173	4.0%	460	2.6%	432	n/a
	Pell	855	6.1%	832	2.8%	761	2.6%	2,448	3.9%	1,178	n/a

*UW System includes four-year institutions only. UW Colleges is reported separately from the UW System total to reflect UW Colleges' primary mission of transfer to four-year institutions.

**Since the UW Colleges does not confer bachelor's degrees, graduation rates refer to bachelor's degrees earned at any UW institution.

***To protect student privacy, rates are not shown when there are 5 or fewer graduates.

Note: URM (Under-represented Minorities) includes African American, American Indian, Southeast Asian, Hispanic/Latino, and Two or More Races.

Part 1 Retention and Graduation Rates

New Freshmen Entering Full-Time in Fall
and Graduating within 6 Years at the Same Institution

UW		Fall 2001		Fall 2002		Fall 2003		3 Year Total		Fall 2015	
		Cohort	Grad w/in 6	Cohort	Grad w/in 6	Cohort	Grad w/in 6	Cohort	Grad w/in 6	Cohort	Grad w/in 6
UW-Eau Claire	Overall	2,125	59.8%	2,050	60.5%	1,869	64.5%	6,044	61.5%	1,891	64.8%
	URM	82	43.9%	54	37.0%	59	52.5%	195	44.6%	120	55.1%
	Pell	327	54.7%	285	55.1%	322	61.2%	934	57.1%	340	63.2%
UW-Green Bay	Overall	866	53.5%	896	54.9%	960	51.8%	2,722	53.3%	1,088	55.4%
	URM	29	31.0%	46	43.5%	47	36.2%	122	37.7%	167	49.0%
	Pell	159	43.4%	176	50.0%	196	48.5%	531	47.5%	222	53.7%
UW-La Crosse	Overall	1,596	65.9%	1,555	65.4%	1,506	68.9%	4,657	66.7%	1,755	68.0%
	URM	62	50.0%	69	33.3%	69	50.7%	200	44.5%	100	55.8%
	Pell	272	66.5%	262	60.3%	233	62.2%	767	63.1%	263	64.7%
UW-Madison	Overall	6,050	79.0%	5,488	81.3%	5,553	81.0%	17,091	80.4%	6,149	82.6%
	URM	381	59.1%	428	67.1%	416	64.9%	1,225	63.8%	465	74.1%
	Pell	575	68.5%	627	70.8%	618	73.0%	1,820	70.8%	1,021	78.9%
UW-Milwaukee	Overall	2,884	41.2%	3,178	41.8%	3,716	42.7%	9,778	42.0%	3,985	43.5%
	URM	466	21.0%	478	20.9%	495	22.2%	1,439	21.4%	785	33.6%
	Pell	553	27.8%	637	31.2%	712	32.7%	1,902	30.8%	997	38.7%
UW-Oshkosh	Overall	1,822	45.7%	1,775	47.3%	1,765	51.4%	5,362	48.1%	1,902	55.5%
	URM	75	26.7%	84	31.0%	91	37.4%	250	32.0%	238	41.6%
	Pell	320	40.0%	360	43.3%	336	44.3%	1,016	42.6%	380	48.6%
UW-Parkside	Overall	854	32.2%	760	31.8%	863	26.7%	2,477	30.2%	990	34.8%
	URM	160	23.8%	118	26.3%	135	17.8%	413	22.5%	222	32.7%
	Pell	194	31.4%	174	25.9%	213	23.5%	581	26.9%	337	33.2%
UW-Platteville	Overall	1,039	53.3%	1,120	55.0%	1,116	56.1%	3,275	54.8%	1,552	59.3%
	URM	18	44.4%	28	28.6%	21	38.1%	67	35.8%	123	49.6%
	Pell	259	51.0%	260	52.3%	278	51.8%	797	51.7%	371	57.2%
UW-River Falls	Overall	1,108	52.1%	1,045	54.9%	1,220	55.2%	3,373	54.1%	1,425	62.2%
	URM	64	31.3%	60	31.7%	80	30.0%	204	30.9%	69	50.2%
	Pell	242	44.2%	225	51.1%	304	52.0%	771	49.3%	316	60.6%
UW-Stevens Point	Overall	1,505	58.9%	1,464	58.9%	1,498	60.5%	4,467	59.5%	1,634	63.4%
	URM	47	55.3%	59	59.3%	72	47.2%	178	53.4%	132	60.0%
	Pell	274	51.8%	305	58.4%	345	51.9%	924	54.0%	310	59.1%
UW-Stout	Overall	1,272	53.9%	1,303	53.0%	1,267	55.4%	3,842	54.1%	1,667	56.6%
	URM	34	32.4%	47	48.9%	39	23.1%	120	35.8%	100	46.9%
	Pell	295	45.1%	286	46.2%	271	44.6%	852	45.3%	345	51.3%
UW-Superior	Overall	339	39.8%	286	36.0%	336	41.4%	961	39.2%	386	43.0%
	URM	16	***	13	***	11	***	40	20.0%	15	27.0%
	Pell	92	33.7%	92	30.4%	112	30.4%	296	31.4%	99	33.4%
UW-Whitewater	Overall	1,857	53.0%	2,004	55.6%	1,825	55.7%	5,686	54.8%	2,146	59.3%
	URM	149	35.6%	148	41.9%	195	37.4%	492	38.2%	230	50.7%
	Pell	318	47.8%	330	46.7%	351	45.9%	999	46.7%	450	54.6%
UW System*	Overall	23,317	58.7%	22,924	59.3%	23,494	59.7%	69,735	59.2%	26,569	62.0%
	URM	1,583	36.5%	1,632	40.3%	1,730	38.8%	4,945	38.5%	2,765	51.6%
	Pell	3,880	48.0%	4,019	49.5%	4,291	49.3%	12,190	49.0%	5,452	56.9%
UW Colleges**	Overall	3,636	26.7%	3,675	27.2%	3,784	27.4%	11,095	27.1%	4,710	32.0%
	URM	152	14.5%	185	14.6%	119	16.0%	456	14.9%	432	32.0%
	Pell	782	22.6%	804	22.8%	855	24.8%	2,441	23.4%	1,178	32.0%

*UW System includes four-year institutions only. UW Colleges is reported separately from the UW System total to reflect UW Colleges' primary mission of transfer to four-year institutions.

**Since the UW Colleges does not confer bachelor's degrees, graduation rates refer to bachelor's degrees earned at any UW institution.

***To protect student privacy, rates are not shown when there are 5 or fewer graduates.

Note: URM (Under-represented Minorities) includes African American, American Indian, Southeast Asian, Hispanic/Latino, and Two or More Races.

Part 1 Retention and Graduation Rates

**New Freshmen Entering Full-Time in Fall
and Retained or Graduated at the Same Institution**

Cohort Year	Overall								Underrepresented Minorities (URMs)							
	Entering Class	Retention Rates			Graduation Rates			Enrolled 7th Year	Entering Class	Retention Rates			Graduation Rates			Enrolled 7th Year
		2nd Yr	3rd Yr	4th Yr	4-year	5-year	6-year			2nd Yr	3rd Yr	4th Yr	4-year	5-year	6-year	
UW-Eau Claire																
Fall 1999	2,006	80.5%	69.6%	64.5%	19.3%	51.4%	58.9%	2.3%	86	80.2%	72.1%	58.1%	12.8%	38.4%	52.3%	***
Fall 2000	2,079	79.6%	70.1%	64.6%	19.4%	52.9%	59.2%	2.1%	56	71.4%	58.9%	57.1%	***	33.9%	44.6%	***
Fall 2001	2,125	81.3%	69.9%	65.3%	18.4%	52.0%	59.8%	2.3%	82	79.3%	62.2%	54.9%	14.6%	32.9%	43.9%	***
Fall 2002	2,050	82.9%	70.2%	65.0%	21.4%	54.7%	60.5%	2.5%	54	74.1%	57.4%	44.4%	11.1%	33.3%	37.0%	***
Fall 2003	1,869	81.3%	70.8%	67.8%	25.4%	57.5%	64.5%	1.9%	59	76.3%	62.7%	61.0%	20.3%	42.4%	52.5%	***
Fall 2004	2,026	83.7%	74.4%	70.4%	25.7%	59.1%			58	81.0%	65.5%	63.8%	17.2%	39.7%		
Fall 2005	2,063	83.7%	73.3%	68.7%	23.5%				65	87.7%	72.3%	63.1%	20.0%			
Fall 2006	2,020	82.4%	73.9%	69.4%					81	81.5%	60.5%	60.5%				
Fall 2007	2,026	84.7%	75.8%						91	83.5%	73.6%					
Fall 2008	2,052	85.7%							99	76.8%						
UW-Green Bay																
Fall 1999	880	73.2%	57.8%	52.0%	18.6%	43.1%	47.2%	2.0%	31	54.8%	32.3%	35.5%	***	19.4%	22.6%	***
Fall 2000	929	74.2%	62.3%	57.8%	23.3%	48.8%	53.3%	2.2%	26	53.8%	42.3%	38.5%	***	26.9%	26.9%	***
Fall 2001	866	74.1%	63.2%	58.3%	24.7%	50.1%	53.5%	1.8%	29	55.2%	48.3%	44.8%	***	27.6%	31.0%	***
Fall 2002	896	81.4%	68.0%	60.8%	22.8%	50.6%	54.9%	3.5%	46	71.7%	54.3%	50.0%	15.2%	32.6%	43.5%	***
Fall 2003	960	74.9%	62.9%	56.7%	25.1%	48.1%	51.8%	2.0%	47	72.3%	53.2%	51.1%	12.8%	27.7%	36.2%	***
Fall 2004	989	75.7%	62.3%	55.9%	23.1%	46.5%			54	64.8%	57.4%	42.6%	***	27.8%		
Fall 2005	904	76.2%	65.0%	61.3%	21.9%				43	60.5%	53.5%	48.8%	***			
Fall 2006	1,019	75.1%	61.7%	55.0%					64	68.8%	48.4%	34.4%				
Fall 2007	987	72.4%	57.6%						55	76.4%	65.5%					
Fall 2008	1,000	74.4%							67	77.6%						
UW-La Crosse																
Fall 1999	1,631	82.5%	72.8%	67.0%	24.3%	57.3%	63.9%	1.8%	65	76.9%	61.5%	55.4%	15.4%	40.0%	47.7%	***
Fall 2000	1,609	84.5%	72.9%	68.6%	26.2%	55.2%	62.5%	1.9%	77	74.0%	63.6%	55.8%	16.9%	36.4%	44.2%	***
Fall 2001	1,596	85.2%	75.9%	69.7%	27.8%	58.1%	65.9%	1.6%	62	80.6%	61.3%	53.2%	14.5%	38.7%	50.0%	***
Fall 2002	1,555	84.8%	75.0%	69.0%	29.8%	59.4%	65.4%	1.4%	69	79.7%	55.1%	43.5%	***	29.0%	33.3%	***
Fall 2003	1,506	86.5%	78.4%	72.2%	33.7%	63.9%	68.9%	1.4%	69	87.0%	73.9%	63.8%	21.7%	42.0%	50.7%	***
Fall 2004	1,539	87.7%	78.9%	72.0%	32.4%	66.0%			62	79.0%	71.0%	64.5%	16.1%	48.4%		
Fall 2005	1,755	85.6%	77.3%	70.9%	33.0%				84	76.2%	69.0%	61.9%	17.9%			
Fall 2006	1,751	87.0%	78.4%	72.9%					77	87.0%	64.9%	57.1%				
Fall 2007	1,750	86.2%	76.1%						92	82.6%	71.7%					
Fall 2008	1,779	83.9%							102	75.5%						

Part 1 Retention and Graduation Rates

**New Freshmen Entering Full-Time in Fall
and Retained or Graduated at the Same Institution**

Cohort Year	Overall								Underrepresented Minorities (URMs)							
	Entering Class	Retention Rates			Graduation Rates			Enrolled 7th Year	Entering Class	Retention Rates			Graduation Rates			Enrolled 7th Year
		2nd Yr	3rd Yr	4th Yr	4-year	5-year	6-year			2nd Yr	3rd Yr	4th Yr	4-year	5-year	6-year	
UW-Madison																
Fall 1999	5,580	91.8%	83.8%	80.3%	41.4%	72.6%	77.3%	1.8%	349	83.7%	68.5%	66.2%	21.5%	48.4%	55.0%	4.3%
Fall 2000	5,713	91.2%	84.6%	81.2%	44.7%	73.8%	78.4%	2.0%	360	82.2%	71.7%	65.6%	20.0%	49.4%	56.1%	4.4%
Fall 2001	6,050	92.0%	85.5%	81.5%	45.6%	74.9%	79.0%	1.7%	381	83.5%	74.8%	69.3%	24.9%	53.0%	59.1%	3.7%
Fall 2002	5,488	92.8%	86.3%	82.7%	49.7%	77.8%	81.3%	1.3%	428	88.1%	81.8%	77.1%	31.5%	61.2%	67.1%	3.0%
Fall 2003	5,553	92.9%	86.5%	82.5%	48.4%	77.2%	81.0%	1.9%	416	89.9%	80.0%	75.0%	31.3%	57.2%	64.9%	4.3%
Fall 2004	5,617	94.0%	88.7%	84.5%	49.7%	79.1%			487	88.3%	81.9%	76.2%	26.7%	57.5%		
Fall 2005	6,118	93.0%	87.4%	83.8%	51.9%				531	89.5%	80.0%	75.9%	28.4%			
Fall 2006	5,633	93.2%	87.7%	83.6%					541	89.5%	80.8%	76.2%				
Fall 2007	5,980	93.6%	87.8%						586	93.2%	83.3%					
Fall 2008	5,759	93.8%							575	91.1%						
UW-Milwaukee																
Fall 1999	2,759	71.1%	61.1%	54.4%	12.9%	33.2%	41.4%	8.0%	400	61.5%	54.0%	43.0%	6.3%	19.5%	26.5%	10.5%
Fall 2000	2,815	73.9%	60.9%	54.3%	14.5%	33.9%	42.3%	7.0%	436	66.3%	53.4%	43.1%	4.4%	16.5%	22.7%	9.9%
Fall 2001	2,884	72.2%	60.5%	53.8%	14.7%	33.3%	41.2%	7.7%	466	65.7%	50.2%	40.6%	6.7%	15.5%	21.0%	9.9%
Fall 2002	3,178	71.6%	59.3%	54.2%	14.4%	34.8%	41.8%	7.2%	478	64.0%	46.2%	38.7%	4.4%	14.9%	20.9%	9.6%
Fall 2003	3,716	72.6%	59.6%	54.0%	14.9%	35.3%	42.7%	7.1%	495	62.2%	47.3%	41.0%	4.6%	16.2%	22.2%	11.3%
Fall 2004	3,714	71.8%	61.0%	54.8%	14.9%	35.6%			517	60.7%	47.4%	38.5%	4.1%	14.3%		
Fall 2005	4,218	69.3%	57.2%	51.8%	14.3%				612	57.4%	44.1%	38.1%	3.6%			
Fall 2006	3,977	71.8%	59.8%	55.6%					531	62.3%	49.7%	44.6%				
Fall 2007	4,465	69.2%	58.0%						621	61.7%	48.6%					
Fall 2008	4,002	73.3%							668	66.2%						
UW-Oshkosh																
Fall 1999	1,834	71.2%	58.8%	54.9%	15.8%	40.0%	48.4%	3.7%	60	65.0%	51.7%	48.3%	11.7%	31.7%	43.3%	***
Fall 2000	1,624	72.2%	59.5%	55.5%	14.5%	38.8%	47.2%	4.4%	54	70.4%	51.9%	50.0%	***	24.1%	31.5%	***
Fall 2001	1,822	72.1%	59.2%	53.7%	13.7%	37.8%	45.7%	4.2%	75	66.7%	48.0%	42.7%	***	18.7%	26.7%	***
Fall 2002	1,775	75.8%	61.6%	55.2%	14.6%	38.0%	47.3%	3.9%	84	65.5%	47.6%	40.5%	***	17.9%	31.0%	***
Fall 2003	1,765	76.4%	63.3%	58.2%	14.8%	41.6%	51.4%	3.9%	91	62.6%	56.0%	48.4%	9.9%	23.1%	37.4%	8.8%
Fall 2004	1,708	76.9%	63.9%	59.7%	14.6%	43.2%			91	72.5%	54.9%	48.4%	***	29.7%		
Fall 2005	1,617	74.4%	63.1%	58.1%	14.5%				107	64.5%	51.4%	48.6%	***			
Fall 2006	1,726	73.5%	63.2%	58.1%					119	64.7%	57.1%	52.9%				
Fall 2007	1,723	76.9%	65.6%						112	78.6%	58.0%					
Fall 2008	1,807	75.8%							161	72.0%						

Part 1 Retention and Graduation Rates

**New Freshmen Entering Full-Time in Fall
and Retained or Graduated at the Same Institution**

Cohort Year	Overall								Underrepresented Minorities (URMs)							
	Entering Class	Retention Rates			Graduation Rates			Enrolled	Entering Class	Retention Rates			Graduation Rates			Enrolled
		2nd Yr	3rd Yr	4th Yr	4-year	5-year	6-year	7th Year		2nd Yr	3rd Yr	4th Yr	4-year	5-year	6-year	7th Year
UW-Parkside																
Fall 1999	811	62.4%	43.8%	38.5%	9.6%	22.9%	28.0%	5.9%	150	63.3%	40.0%	36.0%	6.7%	15.3%	20.0%	4.7%
Fall 2000	747	60.8%	46.9%	41.5%	11.0%	24.4%	30.5%	6.6%	141	53.2%	42.6%	31.2%	7.1%	17.7%	19.9%	5.7%
Fall 2001	854	63.3%	50.1%	44.7%	10.0%	25.9%	32.2%	6.0%	160	65.0%	48.1%	43.1%	8.8%	19.4%	23.8%	7.5%
Fall 2002	760	67.0%	50.8%	43.3%	9.2%	25.3%	31.8%	5.1%	118	68.6%	50.0%	39.8%	6.8%	20.3%	26.3%	5.9%
Fall 2003	863	61.5%	43.0%	36.6%	7.9%	21.4%	26.7%	5.4%	135	59.3%	39.3%	34.1%	***	14.1%	17.8%	8.1%
Fall 2004	890	64.7%	48.1%	39.8%	9.8%	25.8%			188	60.1%	43.6%	36.7%	4.3%	19.7%		
Fall 2005	783	63.1%	48.5%	41.0%	7.8%				178	59.6%	44.4%	32.0%	3.9%			
Fall 2006	814	60.1%	48.4%	41.5%					198	51.0%	38.9%	34.8%				
Fall 2007	833	66.4%	49.8%						192	59.4%	40.1%					
Fall 2008	833	64.3%							238	63.9%						
UW-Platteville																
Fall 1999	1,094	77.0%	63.8%	60.8%	13.5%	41.1%	51.8%	3.3%	22	45.5%	31.8%	27.3%	***	***	***	***
Fall 2000	958	74.9%	62.8%	59.0%	13.5%	38.5%	48.3%	4.8%	16	75.0%	43.8%	43.8%	***	***	***	***
Fall 2001	1,039	76.4%	67.9%	63.5%	16.9%	43.9%	53.3%	3.2%	18	66.7%	55.6%	55.6%	***	***	44.4%	***
Fall 2002	1,120	81.2%	68.0%	63.4%	16.6%	46.7%	55.0%	4.1%	28	60.7%	50.0%	39.3%	***	***	28.6%	***
Fall 2003	1,116	77.4%	68.5%	63.8%	18.2%	47.8%	56.1%	3.8%	21	57.1%	61.9%	52.4%	***	33.3%	38.1%	***
Fall 2004	1,164	76.0%	66.5%	63.2%	17.6%	45.9%			33	42.4%	45.5%	39.4%	***	***		
Fall 2005	1,218	76.8%	66.4%	61.6%	15.4%				38	71.1%	52.6%	50.0%	***			
Fall 2006	1,387	75.2%	64.4%	60.3%					76	60.5%	47.4%	43.4%				
Fall 2007	1,466	74.8%	66.0%						64	57.8%	46.9%					
Fall 2008	1,468	74.0%							77	62.3%						
UW-River Falls																
Fall 1999	1,118	75.8%	65.0%	59.9%	25.6%	52.0%	56.4%	1.8%	45	40.0%	42.2%	42.2%	***	22.2%	31.1%	***
Fall 2000	1,119	73.1%	62.5%	58.6%	23.4%	50.0%	54.1%	1.4%	63	60.3%	49.2%	47.6%	9.5%	28.6%	36.5%	***
Fall 2001	1,108	70.4%	60.4%	56.7%	23.9%	48.0%	52.1%	2.0%	64	60.9%	51.6%	40.6%	10.9%	28.1%	31.3%	***
Fall 2002	1,045	76.1%	63.1%	58.0%	26.5%	50.2%	54.9%	1.7%	60	66.7%	45.0%	41.7%	15.0%	26.7%	31.7%	***
Fall 2003	1,220	77.2%	66.0%	59.4%	25.0%	49.5%	55.2%	2.4%	80	57.5%	50.0%	42.5%	12.5%	21.3%	30.0%	***
Fall 2004	1,197	76.1%	64.4%	58.4%	26.0%	49.1%			81	67.9%	51.9%	42.0%	14.8%	27.2%		
Fall 2005	1,192	71.4%	60.2%	55.8%	22.5%				57	45.6%	35.1%	33.3%	***			
Fall 2006	1,289	75.0%	64.0%	57.2%					66	71.2%	56.1%	36.4%				
Fall 2007	1,276	73.5%	63.6%						62	54.8%	41.9%					
Fall 2008	1,332	74.9%							70	62.9%						

Part 1 Retention and Graduation Rates

**New Freshmen Entering Full-Time in Fall
and Retained or Graduated at the Same Institution**

Cohort Year	Overall								Underrepresented Minorities (URMs)							
	Entering Class	Retention Rates			Graduation Rates			Enrolled	Entering Class	Retention Rates			Graduation Rates			Enrolled
		2nd Yr	3rd Yr	4th Yr	4-year	5-year	6-year	7th Year		2nd Yr	3rd Yr	4th Yr	4-year	5-year	6-year	7th Year
UW-Stevens Point																
Fall 1999	1,490	75.8%	65.8%	61.1%	19.1%	51.5%	57.7%	1.4%	41	61.0%	48.8%	41.5%	***	34.1%	41.5%	***
Fall 2000	1,518	76.9%	67.5%	63.0%	21.9%	52.8%	58.6%	2.2%	47	70.2%	57.4%	46.8%	12.8%	27.7%	38.3%	***
Fall 2001	1,505	77.7%	68.4%	64.0%	19.7%	51.8%	58.9%	2.8%	47	83.0%	76.6%	68.1%	***	36.2%	55.3%	***
Fall 2002	1,464	76.2%	68.5%	64.3%	19.5%	52.6%	58.9%	2.5%	59	69.5%	72.9%	67.8%	15.3%	47.5%	59.3%	***
Fall 2003	1,498	79.5%	70.2%	66.6%	22.4%	54.0%	60.5%	2.9%	72	79.2%	65.3%	55.6%	13.9%	37.5%	47.2%	***
Fall 2004	1,525	76.2%	68.6%	63.6%	21.1%	53.2%			66	71.2%	63.6%	56.1%	16.7%	50.0%		
Fall 2005	1,521	77.3%	69.8%	65.5%	24.0%				52	69.2%	59.6%	59.6%	***			
Fall 2006	1,640	76.0%	67.3%	64.0%					62	67.7%	56.5%	51.6%				
Fall 2007	1,611	75.3%	66.4%						97	77.3%	70.1%					
Fall 2008	1,608	78.4%							102	72.5%						
UW-Stout																
Fall 1999	1,317	77.4%	66.1%	61.9%	15.4%	44.6%	52.7%	3.0%	40	70.0%	50.0%	50.0%	***	27.5%	35.0%	***
Fall 2000	1,307	75.1%	66.2%	61.2%	16.1%	44.1%	53.3%	3.1%	35	57.1%	45.7%	28.6%	***	***	***	***
Fall 2001	1,272	73.8%	63.3%	59.8%	16.0%	45.0%	53.9%	2.9%	34	55.9%	44.1%	41.2%	***	29.4%	32.4%	***
Fall 2002	1,303	72.7%	62.5%	58.4%	16.9%	44.1%	53.0%	3.7%	47	68.1%	61.7%	55.3%	***	36.2%	48.9%	***
Fall 2003	1,267	73.4%	65.0%	62.0%	19.3%	48.5%	55.4%	2.3%	39	53.8%	43.6%	41.0%	***	***	23.1%	***
Fall 2004	1,277	73.5%	63.0%	58.3%	19.9%	46.6%			52	50.0%	44.2%	36.5%	11.5%	26.9%		
Fall 2005	1,699	71.5%	61.6%	58.6%	19.0%				84	57.1%	54.8%	56.0%	9.5%			
Fall 2006	1,507	69.6%	62.6%	58.6%					72	65.3%	47.2%	43.1%				
Fall 2007	1,489	71.8%	64.5%						71	69.0%	62.0%					
Fall 2008	1,633	71.0%							97	64.9%						
UW-Superior																
Fall 1999	412	67.0%	51.5%	45.6%	9.5%	27.2%	36.9%	3.9%	9	***	***	***	***	***	***	***
Fall 2000	406	65.5%	51.5%	42.4%	14.8%	29.6%	35.2%	4.2%	8	***	***	***	***	***	***	***
Fall 2001	339	70.2%	56.6%	49.3%	15.6%	34.8%	39.8%	4.7%	16	62.5%	56.3%	37.5%	***	***	***	***
Fall 2002	286	66.4%	52.4%	44.1%	12.9%	29.0%	36.0%	3.8%	13	61.5%	53.8%	***	***	***	***	***
Fall 2003	336	67.0%	51.5%	44.0%	19.6%	35.1%	41.4%	3.6%	11	72.7%	***	***	***	***	***	***
Fall 2004	329	71.7%	58.1%	48.6%	16.4%	36.2%			14	71.4%	57.1%	42.9%	***	***		
Fall 2005	336	69.0%	53.6%	48.2%	18.2%				10	***	***	***	***			
Fall 2006	293	62.5%	47.1%	43.3%					13	53.8%	***	***				
Fall 2007	343	65.9%	53.4%						14	50.0%	***					
Fall 2008	303	71.6%							15	80.0%						

Part 1 Retention and Graduation Rates

**New Freshmen Entering Full-Time in Fall
and Retained or Graduated at the Same Institution**

Cohort Year	Overall								Underrepresented Minorities (URMs)							
	Entering Class	Retention Rates			Graduation Rates			Enrolled 7th Year	Entering Class	Retention Rates			Graduation Rates			Enrolled 7th Year
		2nd Yr	3rd Yr	4th Yr	4-year	5-year	6-year			2nd Yr	3rd Yr	4th Yr	4-year	5-year	6-year	
UW-Whitewater																
Fall 1999	1,877	74.4%	62.1%	57.4%	19.3%	43.2%	50.5%	3.8%	134	61.2%	43.3%	39.6%	6.7%	20.1%	25.4%	7.5%
Fall 2000	2,052	74.6%	64.2%	59.8%	20.7%	45.0%	52.1%	3.6%	186	67.7%	53.2%	49.5%	11.8%	29.0%	37.6%	5.4%
Fall 2001	1,857	77.3%	66.4%	61.7%	20.4%	45.5%	53.0%	3.3%	149	71.1%	55.7%	50.3%	5.4%	26.2%	35.6%	***
Fall 2002	2,004	78.3%	68.1%	63.1%	23.1%	48.6%	55.6%	3.3%	148	77.7%	64.9%	54.1%	12.8%	34.5%	41.9%	4.7%
Fall 2003	1,825	76.9%	68.6%	62.3%	25.2%	49.0%	55.7%	2.6%	195	72.3%	59.5%	47.7%	9.7%	32.3%	37.4%	
Fall 2004	1,745	77.0%	66.8%	61.6%	24.5%	48.9%			234	69.2%	52.1%	47.4%	9.4%	29.1%		
Fall 2005	1,701	74.6%	65.0%	59.8%	25.7%				159	64.8%	52.8%	42.8%	10.1%			
Fall 2006	1,780	77.0%	68.5%	63.8%					129	76.0%	61.2%	55.8%				
Fall 2007	2,048	76.1%	66.0%						197	62.9%	51.3%					
Fall 2008	2,132	78.0%							203	72.4%						
UW System*																
Fall 1999	22,809	79.0%	68.1%	63.4%	23.2%	50.6%	57.3%	3.2%	1,432	68.2%	54.8%	48.9%	11.0%	29.2%	36.2%	6.3%
Fall 2000	22,876	79.1%	69.0%	64.4%	25.1%	51.5%	58.0%	3.3%	1,505	69.3%	56.8%	49.4%	10.6%	29.0%	35.5%	6.3%
Fall 2001	23,317	79.7%	69.9%	65.1%	25.5%	52.2%	58.7%	3.2%	1,583	71.6%	58.2%	51.0%	12.0%	29.6%	36.5%	6.2%
Fall 2002	22,924	80.7%	70.1%	65.1%	26.6%	53.2%	59.3%	3.2%	1,632	73.5%	60.0%	52.6%	13.8%	33.3%	40.3%	5.8%
Fall 2003	23,494	80.2%	70.2%	65.3%	27.3%	53.6%	59.7%	3.3%	1,730	71.8%	59.0%	52.4%	14.2%	31.5%	38.8%	6.9%
Fall 2004	23,720	80.5%	71.1%	65.9%	27.4%	54.4%			1,937	70.6%	58.9%	51.8%	12.3%	32.6%		
Fall 2005	25,125	79.2%	69.8%	65.2%	27.8%				2,020	69.0%	57.5%	51.7%	12.6%			
Fall 2006	24,836	79.2%	70.1%	65.5%					2,029	71.8%	59.2%	53.8%				
Fall 2007	25,997	79.3%	69.9%						2,254	73.2%	61.0%					
Fall 2008	25,708	80.2%							2,474	73.8%						
UW Colleges**																
Fall 1999	3,305	63.0%	49.5%	41.1%	4.8%	18.8%	26.1%	10.1%	106	55.7%	42.5%	38.7%	***	14.2%	20.8%	9.4%
Fall 2000	3,443	64.2%	49.8%	40.9%	4.5%	18.5%	26.0%	9.5%	113	62.8%	43.4%	33.6%	***	8.8%	12.4%	14.2%
Fall 2001	3,636	66.7%	48.9%	40.3%	5.1%	17.9%	26.7%	9.3%	152	65.8%	44.1%	35.5%	***	8.6%	14.5%	13.2%
Fall 2002	3,675	65.8%	49.9%	41.3%	4.6%	18.6%	27.2%	8.8%	185	62.2%	38.9%	34.1%	***	8.6%	14.6%	11.4%
Fall 2003	3,784	64.2%	48.3%	42.0%	5.0%	19.4%	27.4%	10.1%	119	56.3%	36.1%	31.9%	***	11.8%	16.0%	14.3%
Fall 2004	3,755	64.0%	47.8%	39.6%	5.1%	17.7%			168	57.1%	39.3%	31.5%	***	11.9%		
Fall 2005	3,588	63.3%	48.0%	39.8%	4.7%				173	53.2%	41.0%	35.8%	4.0%			
Fall 2006	3,565	65.4%	48.7%	40.3%					174	54.0%	40.8%	34.5%				
Fall 2007	3,644	65.1%	48.0%						246	64.2%	44.3%					
Fall 2008	3,663	65.8%							295	56.9%						

*UW System includes four-year institutions only. UW Colleges is reported separately from the UW System total to reflect UW Colleges' primary mission of transfer to four-year institutions.

**UW Colleges' rates refer to retention and graduation at any UW institution.

***To protect student privacy, rates are not shown when there are 5 or fewer students retained or graduated.

Note: URM (Under-represented Minorities) includes African American, American Indian, Southeast Asian, Hispanic/Latino, and Two or More Races.

Part 1

Retention and Graduation Rates

New Transfers Entering Full-Time in Fall and Retained to the Second Year at the Same Institution

UW	Fall 2006		Fall 2007		Fall 2008		3 Year Total		Fall 2015	
	Cohort	Retained	Cohort	Retained	Cohort	Retained	Cohort	Retained	Cohort	Retained
UW-Eau Claire	470	71.7%	506	74.5%	526	70.5%	1,502	72.2%	674	77.2%
UW-Green Bay	316	77.5%	407	77.1%	397	76.3%	1,120	77.0%	398	80.1%
UW-La Crosse	333	79.3%	326	77.6%	285	75.8%	944	77.6%	430	76.0%
UW-Madison	1,260	88.5%	1,233	89.1%	1,180	89.2%	3,673	88.9%	1,296	91.1%
UW-Milwaukee	1,381	76.9%	1,261	76.4%	1,294	78.3%	3,936	77.2%	1,753	78.3%
UW-Oshkosh	674	83.1%	599	80.6%	699	83.0%	1,972	82.3%	886	77.1%
UW-Parkside	236	64.0%	270	70.7%	266	69.9%	772	68.4%	282	73.4%
UW-Platteville	297	79.5%	283	78.4%	308	84.1%	888	80.7%	407	82.3%
UW-River Falls	332	75.3%	421	73.9%	381	72.4%	1,134	73.8%	602	74.9%
UW-Stevens Point	562	77.0%	604	77.8%	578	78.4%	1,744	77.8%	667	82.0%
UW-Stout	506	78.3%	483	78.3%	466	80.9%	1,455	79.1%	520	80.9%
UW-Superior	278	65.5%	276	64.5%	242	75.6%	796	68.2%	349	64.0%
UW-Whitewater	525	81.5%	550	79.1%	566	76.3%	1,641	78.9%	630	77.5%
UW System*	7,170	78.9%	7,219	78.6%	7,188	79.3%	21,577	78.9%	8,893	79.5%
UW Colleges*	442	42.5%	497	43.5%	485	40.0%	1,424	42.0%	624	42.0%

New Transfers Entering Full-Time in Fall and Graduating within 4 Years at the Same Institution

UW	Fall 2003		Fall 2004		Fall 2005		3 Year Total		Fall 2015	
	Cohort	Grad w/in 4	Cohort	Grad w/in 4	Cohort	Grad w/in 4	Cohort	Grad w/in 4	Cohort	Grad w/in 4
UW-Eau Claire	412	49.8%	469	49.3%	464	52.2%	1,345	50.4%	674	55.1%
UW-Green Bay	336	52.7%	340	55.0%	366	50.5%	1,042	52.7%	398	52.5%
UW-La Crosse	286	46.9%	312	61.2%	383	54.6%	981	54.4%	430	55.0%
UW-Madison	1,076	73.3%	1,037	76.0%	1,126	75.9%	3,239	75.1%	1,296	77.5%
UW-Milwaukee	1,369	47.1%	1,524	44.7%	1,270	46.1%	4,163	45.9%	1,753	46.1%
UW-Oshkosh	638	49.5%	760	46.2%	653	52.2%	2,051	49.1%	886	51.2%
UW-Parkside	274	41.6%	260	36.9%	259	40.2%	793	39.6%	282	43.7%
UW-Platteville	285	51.6%	294	57.8%	282	50.0%	861	53.2%	407	50.0%
UW-River Falls	374	55.6%	417	54.7%	396	56.6%	1,187	55.6%	602	58.6%
UW-Stevens Point	582	53.4%	594	51.3%	592	54.9%	1,768	53.2%	667	58.0%
UW-Stout	435	57.9%	486	57.2%	500	58.0%	1,421	57.7%	520	58.0%
UW-Superior	308	43.5%	286	36.7%	303	37.6%	897	39.4%	349	40.0%
UW-Whitewater	422	64.0%	557	55.5%	529	53.1%	1,508	57.0%	630	54.0%
UW System*	6,797	54.5%	7,336	53.4%	7,123	54.7%	21,256	54.2%	8,893	55.4%
UW Colleges**	399	14.8%	399	14.8%	414	12.8%	1,212	14.1%	624	n/a

Part 1

Retention and Graduation Rates

New Transfers Entering Full-Time in Fall and Graduating within 6 Years at the Same Institution

UW	Fall 2001		Fall 2002		Fall 2003		3 Year Total		Fall 2015	
	Cohort	Grad w/in 6	Cohort	Grad w/in 6	Cohort	Grad w/in 6	Cohort	Grad w/in 6	Cohort	Grad w/in 6
UW-Eau Claire	460	55.2%	476	53.6%	412	56.3%	1,348	55.0%	674	60.4%
UW-Green Bay	328	53.7%	198	64.6%	336	59.5%	862	58.5%	398	61.9%
UW-La Crosse	345	68.1%	234	63.7%	286	60.1%	865	64.3%	430	61.0%
UW-Madison	1,183	78.8%	1,214	78.5%	1,076	80.4%	3,473	79.2%	1,296	82.0%
UW-Milwaukee	1,405	59.6%	1,204	57.6%	1,369	57.0%	3,978	58.1%	1,753	57.0%
UW-Oshkosh	580	58.4%	593	59.0%	638	61.8%	1,811	59.8%	886	59.5%
UW-Parkside	236	44.5%	283	50.9%	274	48.9%	793	48.3%	282	52.4%
UW-Platteville	296	60.5%	294	63.3%	285	61.1%	875	61.6%	407	61.0%
UW-River Falls	314	65.3%	313	61.7%	374	63.4%	1,001	63.4%	602	65.3%
UW-Stevens Point	584	64.4%	574	63.4%	582	63.4%	1,740	63.7%	667	66.5%
UW-Stout	538	63.6%	538	66.2%	435	68.3%	1,511	65.9%	520	68.3%
UW-Superior	222	47.7%	299	52.8%	308	52.6%	829	51.4%	349	48.0%
UW-Whitewater	416	65.6%	485	67.4%	422	72.7%	1,323	68.6%	630	74.0%
UW System*	6,907	63.1%	6,705	63.5%	6,797	63.6%	20,409	63.4%	8,893	64.4%
UW Colleges**	583	26.9%	526	29.5%	399	27.3%	1,508	27.9%	624	32.0%

*UW System includes four-year institutions only. UW Colleges is reported separately from the UW System total to reflect UW Colleges' primary mission of transfer to four-year institutions.

**Since the UW Colleges does not confer bachelor's degrees, graduation rates refer to bachelor's degrees earned at any UW institution.

Part 1

Retention and Graduation Rates

New Freshmen or New Transfers Entering in Spring or Part-Time in Fall and Retained to the Second Year at the Same Institution

UW	Fall 2005		Fall 2006		Fall 2007		3 Year Total	
	Cohort	Retained	Cohort	Retained	Cohort	Retained	Cohort	Retained
UW-Eau Claire	333	62.8%	325	69.2%	339	69.6%	997	67.2%
UW-Green Bay	417	55.9%	406	59.9%	445	67.6%	1,268	61.3%
UW-La Crosse	307	69.7%	298	73.2%	171	70.8%	776	71.3%
UW-Madison	520	81.7%	534	83.7%	465	80.4%	1,519	82.0%
UW-Milwaukee	1,222	63.1%	1,210	62.9%	1,147	64.0%	3,579	63.3%
UW-Oshkosh	512	65.4%	538	61.7%	655	66.6%	1,705	64.7%
UW-Parkside	404	53.0%	468	52.8%	457	53.4%	1,329	53.0%
UW-Platteville	228	57.0%	248	51.6%	291	45.4%	767	50.8%
UW-River Falls	257	55.3%	298	58.7%	256	64.5%	811	59.4%
UW-Stevens Point	399	72.4%	374	69.8%	390	67.7%	1,163	70.0%
UW-Stout	348	67.8%	383	62.9%	402	67.4%	1,133	66.0%
UW-Superior	281	51.6%	259	57.1%	235	55.7%	775	54.7%
UW-Whitewater	334	70.4%	350	67.1%	355	70.1%	1,039	69.2%
UW System*	5,562	64.3%	5,691	64.3%	5,608	65.2%	16,861	64.6%
UW Colleges*	1,788	40.5%	1,956	41.3%	1,989	43.0%	5,733	41.7%

New Freshmen or New Transfers Entering in Spring or Part-Time in Fall and Graduating within 4 Years at the Same Institution

UW	Fall 2003		Fall 2004		Fall 2005		3 Year Total	
	Cohort	Grad w/in 4	Cohort	Grad w/in 4	Cohort	Grad w/in 4	Cohort	Grad w/in 4
UW-Eau Claire	385	36.9%	377	32.1%	333	30.9%	1,095	33.4%
UW-Green Bay	422	34.1%	403	30.3%	417	34.8%	1,242	33.1%
UW-La Crosse	217	37.3%	254	35.4%	307	28.7%	778	33.3%
UW-Madison	536	56.3%	513	56.9%	520	56.9%	1,569	56.7%
UW-Milwaukee	1,373	27.2%	1,408	25.4%	1,222	25.2%	4,003	26.0%
UW-Oshkosh	563	31.3%	564	35.3%	512	35.0%	1,639	33.8%
UW-Parkside	505	15.4%	451	16.9%	404	17.1%	1,360	16.4%
UW-Platteville	234	23.5%	238	20.6%	228	28.1%	700	24.0%
UW-River Falls	205	35.1%	259	31.3%	257	28.0%	721	31.2%
UW-Stevens Point	415	33.7%	342	35.1%	399	30.6%	1,156	33.0%
UW-Stout	377	38.5%	364	42.9%	348	40.2%	1,089	40.5%
UW-Superior	274	20.8%	276	22.8%	281	25.3%	831	23.0%
UW-Whitewater	427	35.8%	380	38.9%	334	39.8%	1,141	38.0%
UW System*	5,933	32.3%	5,829	32.2%	5,562	32.2%	17,324	32.2%
UW Colleges**	2,097	5.2%	1,935	5.7%	1,788	5.0%	5,820	5.3%

Part 1

Retention and Graduation Rates

New Freshmen or New Transfers Entering in Spring or Part-Time in Fall and Graduating within 6 Years at the Same Institution

UW	Fall 2001		Fall 2002		Fall 2003		3 Year Total	
	Cohort	Grad w/in 6	Cohort	Grad w/in 6	Cohort	Grad w/in 6	Cohort	Grad w/in 6
UW-Eau Claire	366	44.3%	386	45.1%	385	46.5%	1,137	45.3%
UW-Green Bay	500	35.2%	372	42.2%	422	41.9%	1,294	39.4%
UW-La Crosse	268	50.7%	259	51.0%	217	50.7%	744	50.8%
UW-Madison	588	67.3%	529	66.0%	536	67.5%	1,653	67.0%
UW-Milwaukee	1,477	35.1%	1,283	36.4%	1,373	38.3%	4,133	36.6%
UW-Oshkosh	569	42.9%	486	43.6%	563	42.5%	1,618	43.0%
UW-Parkside	387	27.4%	462	24.9%	505	21.8%	1,354	24.4%
UW-Platteville	246	29.7%	301	28.2%	234	37.6%	781	31.5%
UW-River Falls	227	49.3%	232	49.6%	205	51.2%	664	50.0%
UW-Stevens Point	393	48.1%	395	46.1%	415	51.3%	1,203	48.5%
UW-Stout	407	46.2%	367	50.1%	377	52.0%	1,151	49.3%
UW-Superior	312	26.6%	284	27.5%	274	32.1%	870	28.6%
UW-Whitewater	353	46.5%	386	49.2%	427	48.9%	1,166	48.3%
UW System*	6,093	41.8%	5,742	42.5%	5,933	43.9%	17,768	42.7%
UW Colleges**	2,192	15.1%	2,042	14.8%	2,097	14.4%	6,331	14.8%

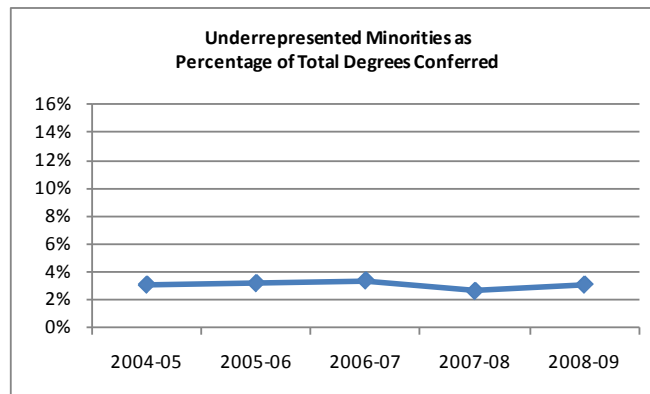
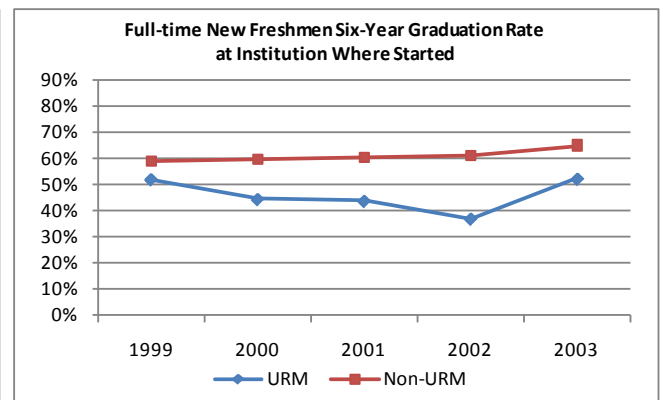
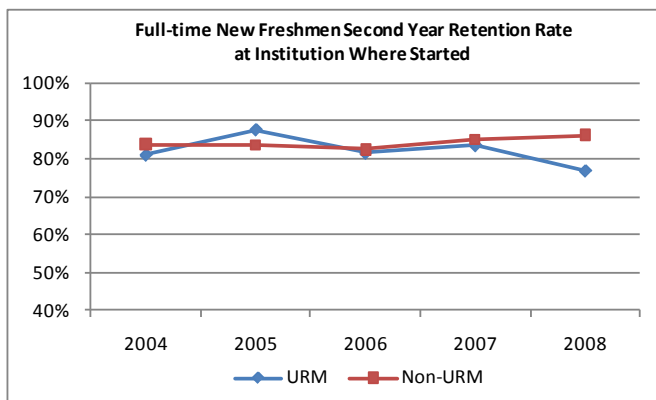
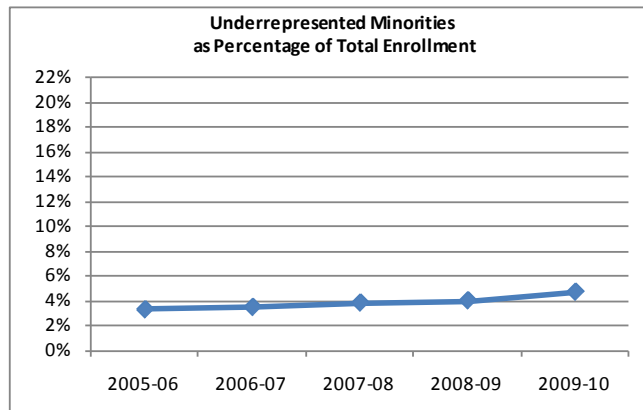
*UW System includes four-year institutions only. UW Colleges is reported separately from the UW System total to reflect UW Colleges' primary mission of transfer to four-year institutions.

**Since the UW Colleges does not confer bachelor's degrees, graduation rates refer to bachelor's degrees earned at any UW institution.

Part 2 Closing the Achievement Gap

UW-Eau Claire

- Enrollment of **underrepresented minorities (URM)** has increased to 4.7%, but second year retention and graduation rates continue to lag behind non-underrepresented minorities (non-URM). **Second year retention** has declined, and the gap between URM and non-URM students has widened from 2.8 to 9.4 percentage points in recent years. The gap in **six-year graduation rates** increased from 6.9 to 12.7 percentage points with the most recent available data. Intervening years saw a gap as high as 24.3 percentage points. The percentage of **degrees conferred** to URM students was 3.1% in both 2004-05 and 2008-09.

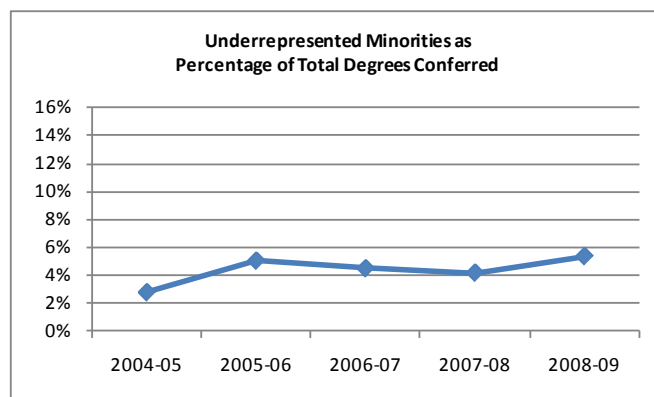
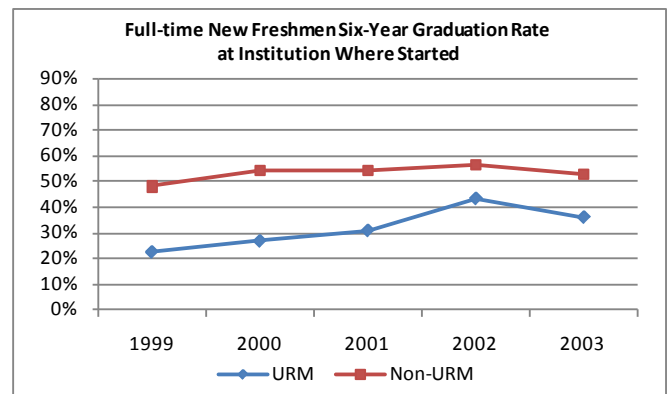
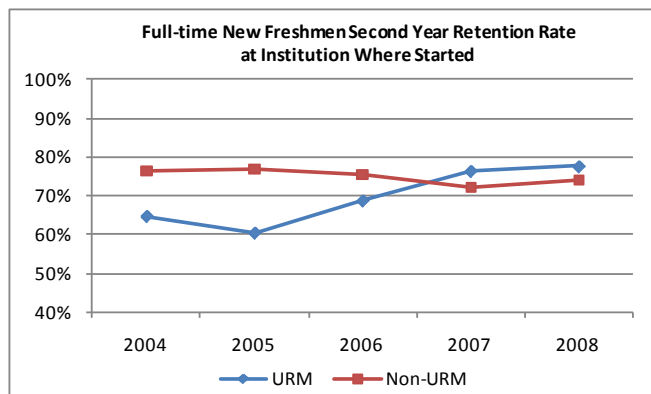
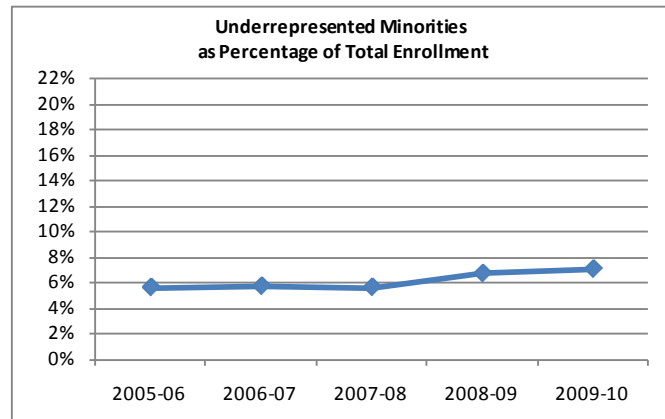


- The percentage of undergraduate enrollment that is **low income** has remained stable at 18% to 20% over the last few years. **Second year retention** also remained stable, but the gap between low income students and other students has widened from 2.8 to 3.5 percentage points. The **six-year graduation rate** has increased, and the gap between low income students and other students has narrowed from 11.9 to 4.0 percentage points.

Part 2 Closing the Achievement Gap

UW-Green Bay

- Enrollment of **underrepresented minorities (URM)** has increased to 7.1%. **Second year retention** has increased, and the gap between URM and non-underrepresented minorities (non-URM) has disappeared in recent years. The gap in **six-year graduation rates** has narrowed from 25.6 to 16.5 percentage points with the most recent available data, and it has been as low as 12.8 percentage points. The percentage of **degrees conferred** to URM students increased from 2.8% in 2004-05 to 5.4% in 2008-09.

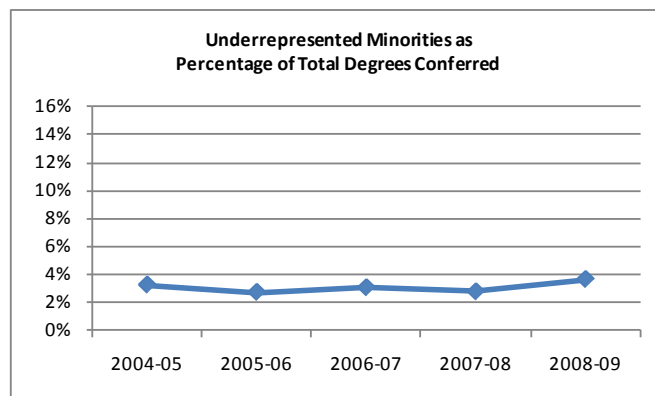
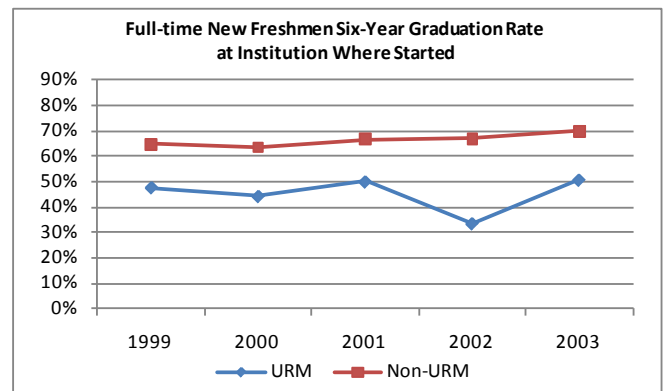
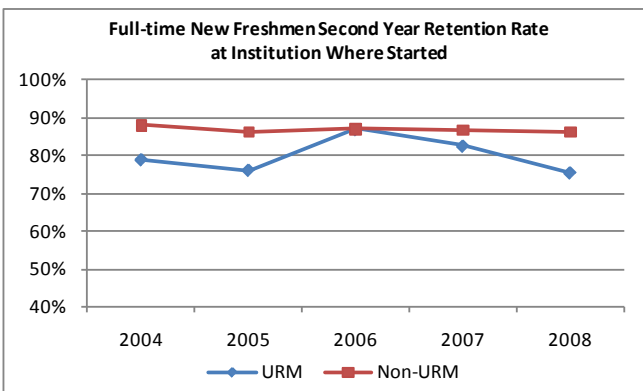
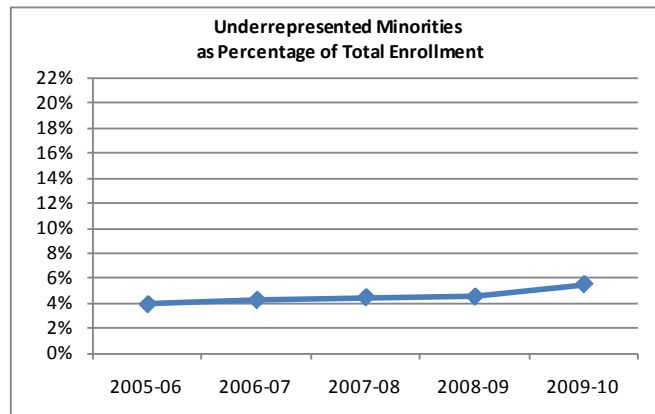


- The percentage of undergraduate enrollment that is **low income** has remained constant around 22% over the last few years. **Second year retention rates** varied between 69% and 78%, and the gap between low income students and other students has disappeared. The **six-year graduation rate** has increased, and the gap between low income students and other students has narrowed from 9.8 to 4.1 percentage points.

Part 2 Closing the Achievement Gap

UW-La Crosse

- Enrollment of **underrepresented minorities (URM)** has increased to 5.5%, but second year retention and graduation rates continue to lag behind non-underrepresented minorities (non-URM). **Second year retention** has declined, and the gap between URM and non-URM students has widened from 9.0 to 10.8 percentage points with the most recent available data. The gap in **six-year graduation rates** also increased from 17.0 to 19.1 percentage points and it has been as high as 33.6 percentage points. The percentage of **degrees conferred** to URM students increased from 3.3% in 2004-05 to 3.7% in 2008-09.

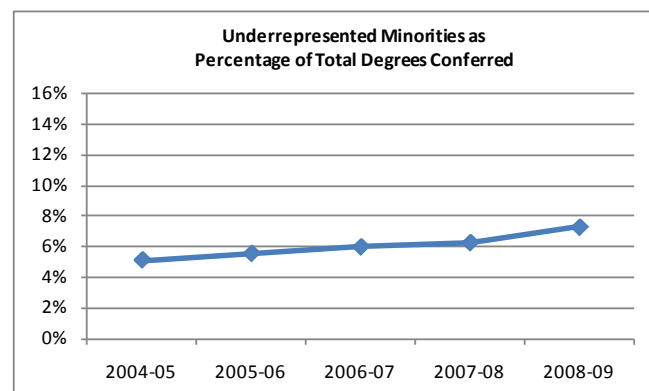
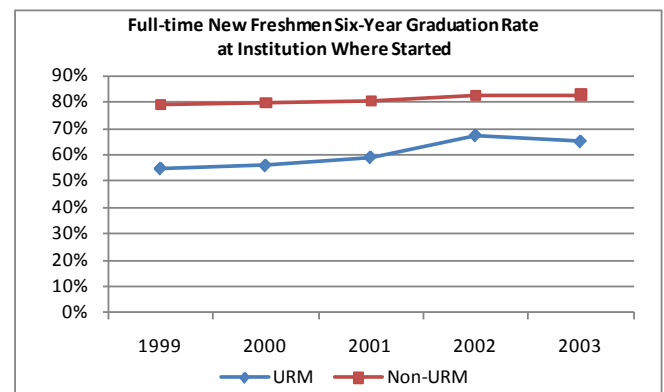
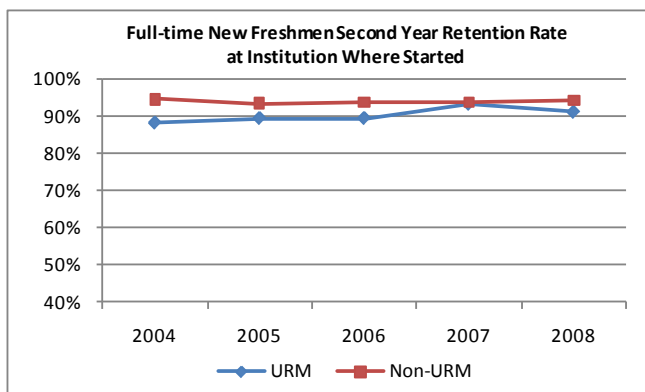
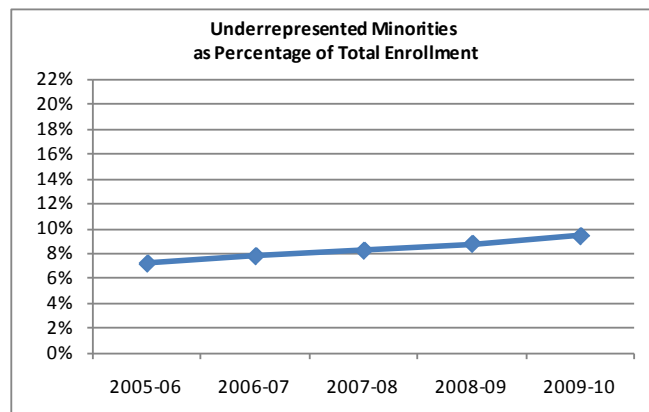


- The percentage of undergraduate enrollment that is **low income** has remained stable at 17% over the last few years. **Second year retention** has declined, but the gap between low income students and other students has narrowed from 4.1 to 3.3 percentage points. The **six-year graduation rate** has increased in recent years, but the gap between low income students and other students has widened from 7.3 to 7.9 percentage points.

Part 2 Closing the Achievement Gap

UW-Madison

- Enrollment of **underrepresented minorities (URM)** has increased steadily to 9.4%, but second year retention and graduation rates continue to lag behind non-underrepresented minorities (non-URM). **Second year retention** has increased, and the gap between URM and non-URM students has decreased from 6.3 to 3.1 percentage points in recent years. The gap in **six-year graduation rates** narrowed from 24.0 to 17.9 percentage points with the most recent available data. The percentage of **degrees conferred** to URM students increased from 5.1% in 2004-05 to 7.3% in 2008-09.

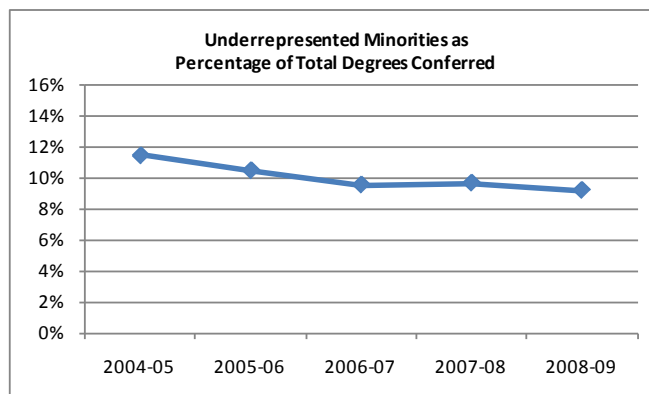
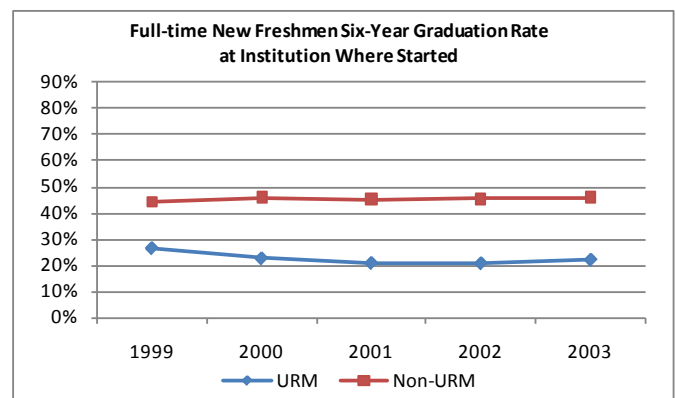
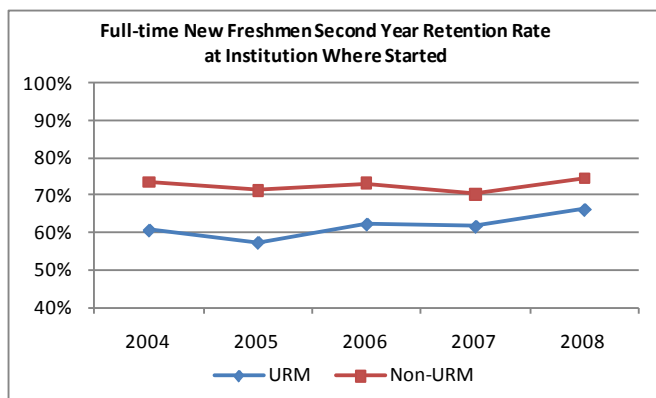
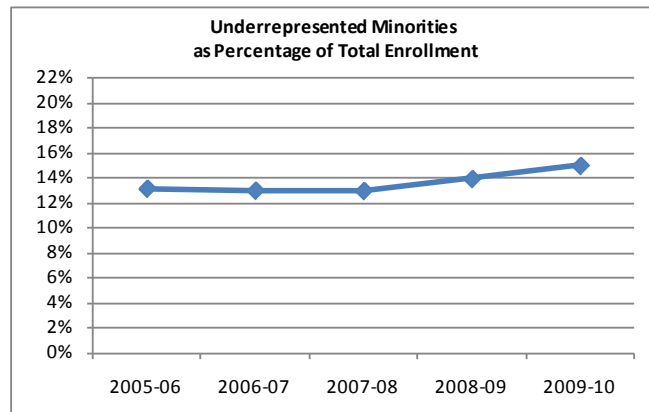


- The percentage of undergraduate enrollment that is **low income** has been stable at 12%. **Second year retention** also remained stable, and the gap between low income students and other students has increased slightly from 2.4 to 2.8 percentage points. The **six-year graduation rate** has improved, and the gap between low income students and other students has narrowed from 16.5 to 9.0 percentage points.

Part 2 Closing the Achievement Gap

UW-Milwaukee

- Enrollment of **underrepresented minorities (URM)** has increased to 15.0%, but second year retention and graduation rates continue to lag behind non-underrepresented minorities (non-URM). **Second year retention** has improved, and the gap between URM and non-URM students has narrowed from 12.8 to 8.3 percentage points in recent years. The gap in **six-year graduation rates** increased from 17.6 to 23.8 percentage points according to the most recent available data. The percentage of **degrees conferred** to URM students decreased from 11.5% in 2004-05 to 9.2% in 2008-09.

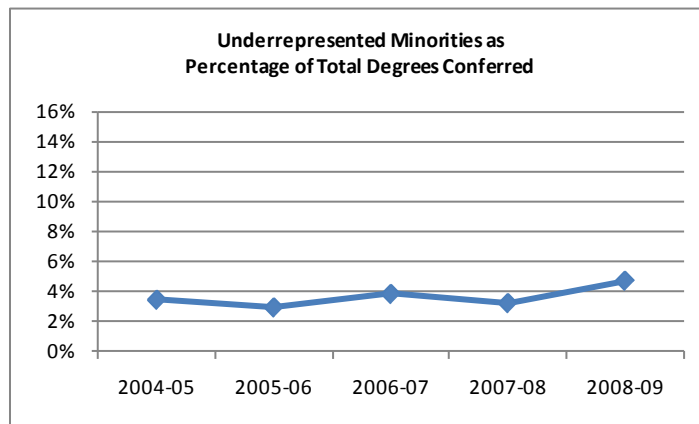
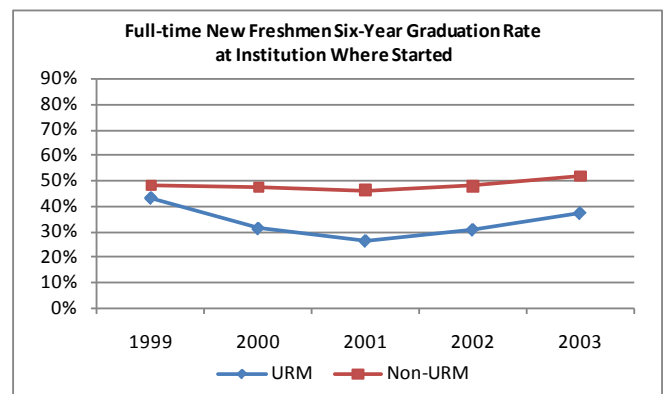
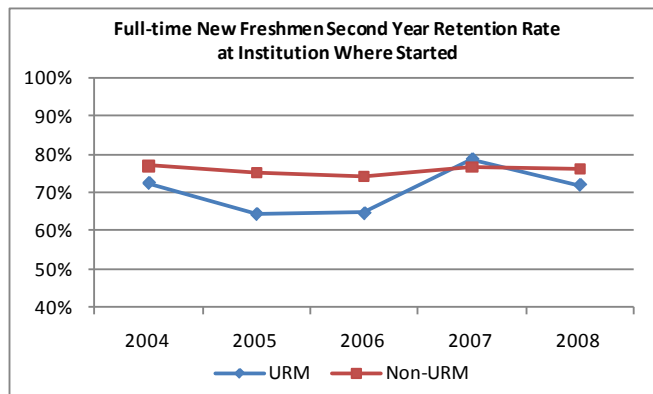
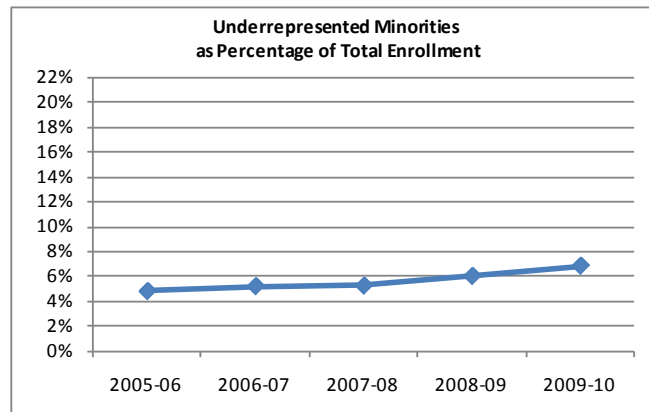


- The percentage of undergraduate enrollment that is **low income** has remained stable at over 20 percent. **Second year retention** of this group increased to 70.7% according to the most recent data, and the gap between low income students and other students decreased to 3.3 percentage points. **The six-year graduation rate** decreased slightly, and the gap between low income students and other students has widened from 9.0 to 12.4 percentage points.

Part 2 Closing the Achievement Gap

UW-Oshkosh

- Enrollment of **underrepresented minorities (URM)** steadily increased to 6.9%, but second year retention and graduation rates continue to lag behind non-underrepresented minorities (non-URM). **Second year retention** and the gap between URM and non-URM students have remained about the same with the most recent available data, although both fluctuated in intervening years. The gap in **six-year graduation rates** increased from 5.1 to 14.6 percentage points over the same period of time. The percentage of **degrees conferred** to URM students increased from 3.5% in 2004-05 to 4.7% in 2008-09.

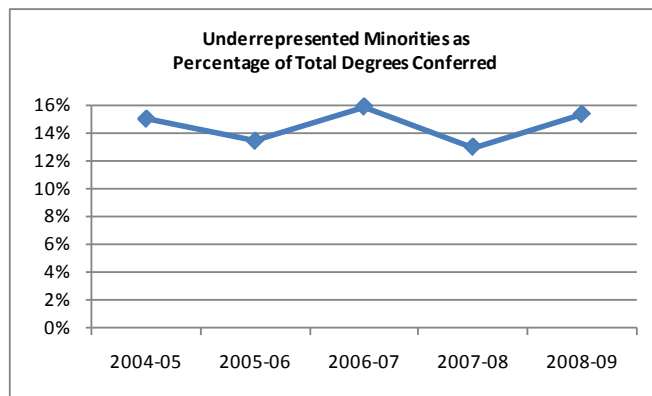
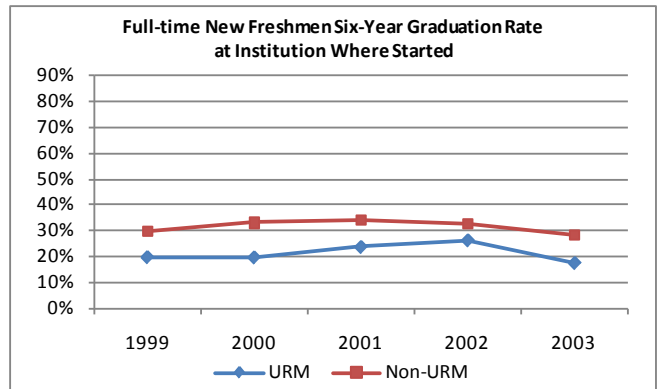
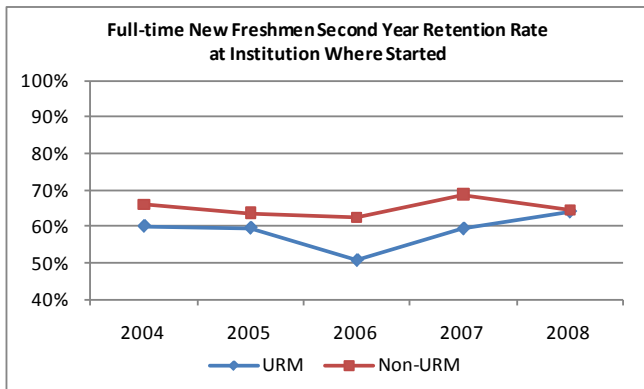
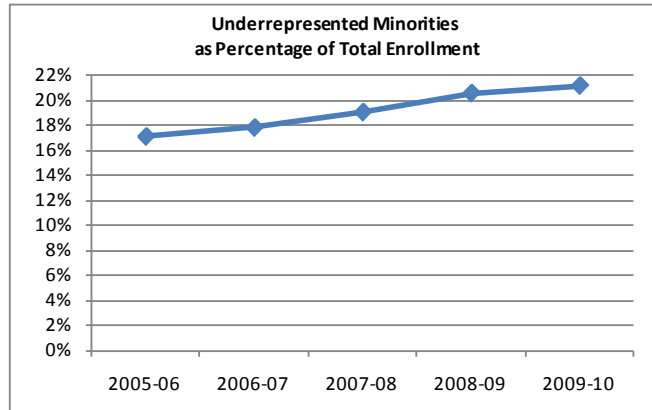


- The percentage of undergraduate enrollment that is **low income** has remained stable at just over 20%. **Second year retention** also remained stable, and the gap between low income students and other students has narrowed from 2.8 percentage points to 1.1 points. The **six-year graduation rate** has stayed the same, but the gap between low income students and other students has widened from 4.9 percentage points to 8.8 points.

Part 2 Closing the Achievement Gap

UW-Parkside

- Enrollment of **underrepresented minorities (URM)** has increased to 21.1%. **Second year retention** has improved, and the gap between URM and non-underrepresented minorities (non-URM) has almost disappeared with the most recent available data. The gap in **six-year graduation rates** widened from 9.9 to 10.6 percentage points in recent years. The percentage of **degrees conferred** to URM students increased from 15.0% in 2004-05 to 15.4% in 2008-09.

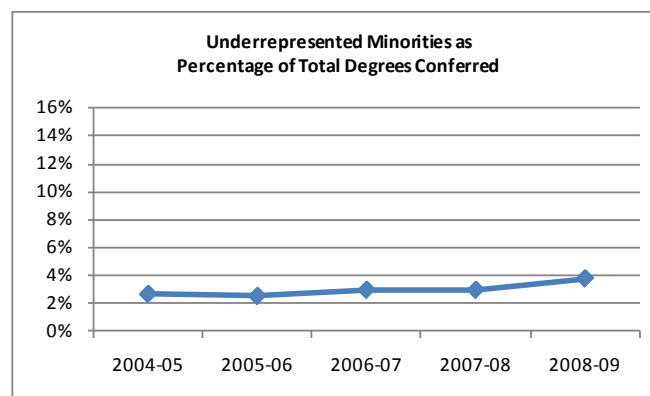
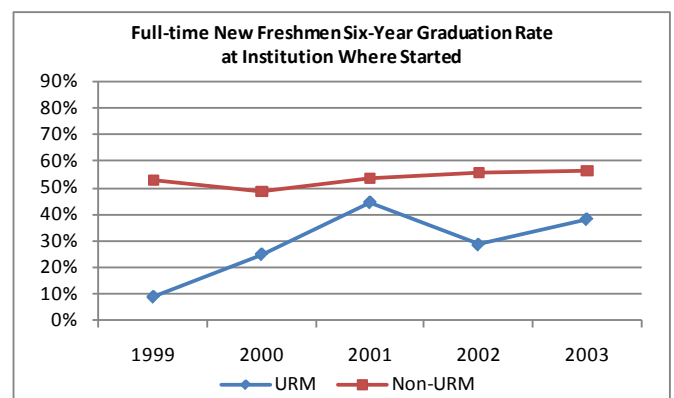
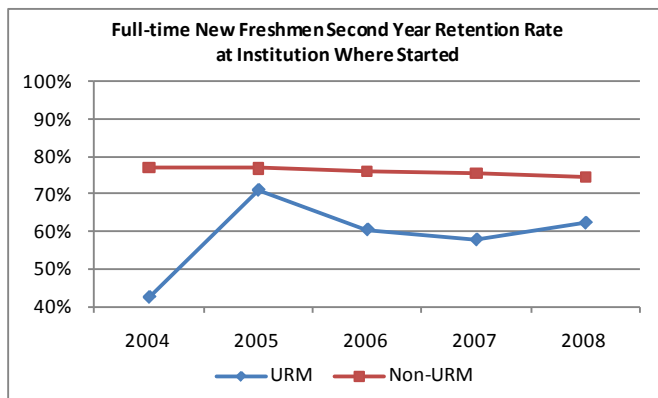
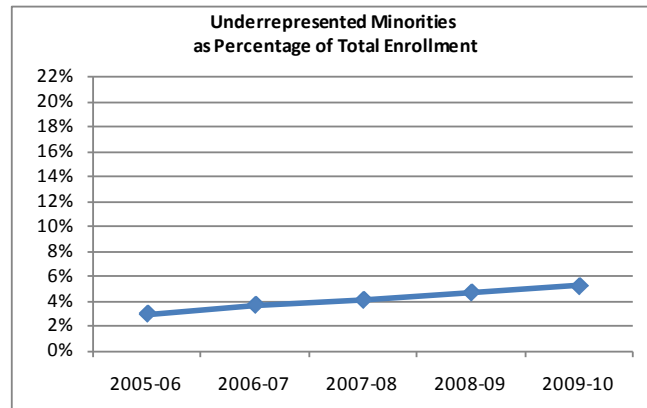


- The percentage of undergraduate enrollment that is **low income** has increased to more than 30% over the last few years. **Second year retention rates** stayed the same, and the gap between low income students and other students has disappeared with the most recent available data. The **six-year graduation rate** and the gap between low income students and other students also remained stable at around 24% and 5 percentage points.

Part 2 Closing the Achievement Gap

UW-Platteville

- Enrollment of **underrepresented minorities (URM)** has increased to 5.2%, but second year retention and graduation rates continue to lag behind non-underrepresented minorities (non-URM). **Second year retention** has improved, and the gap between URM and non-URM students has narrowed from 34.7 to 12.3 percentage points in recent years. The gap in **six-year graduation rates** has declined from 43.7 to 18.3 percentage points. The percentage of **degrees conferred** to URM students increased from 2.6% in 2004-05 to 3.8% in 2008-09.

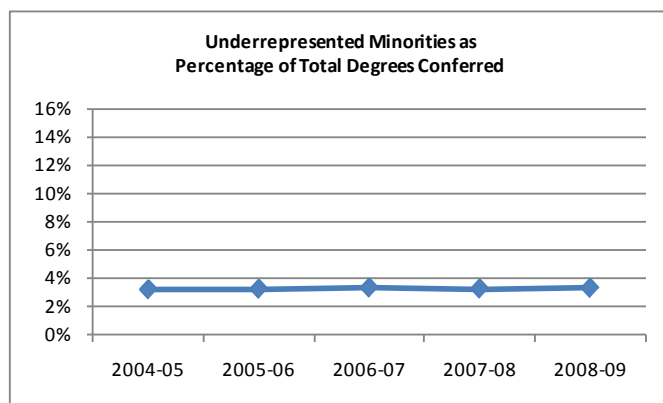
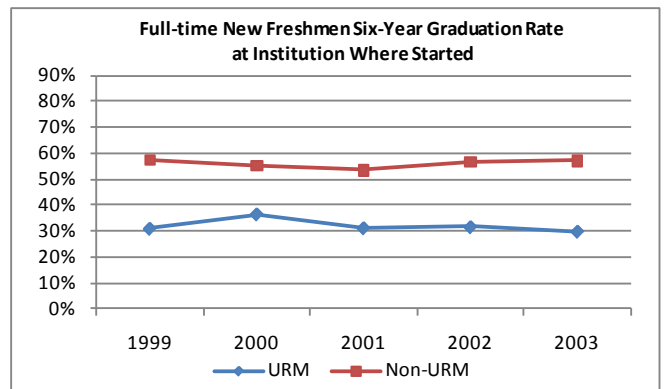
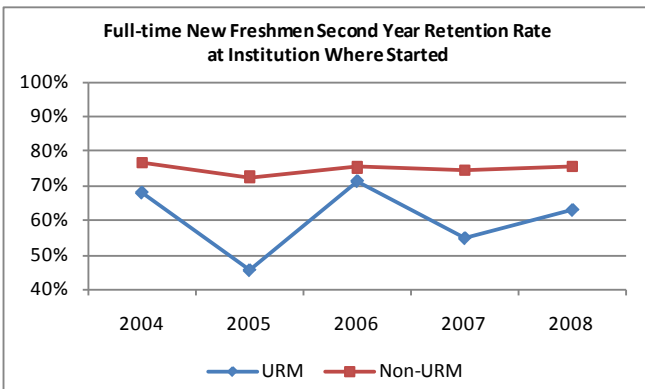
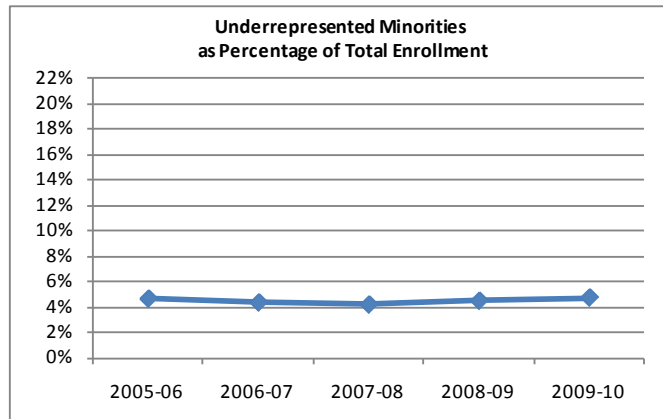


- The percentage of undergraduate enrollment that is **low income** remained around 25% over the last few years. **Second year retention rates** and the gap between low income students and other students have remained stable. The **six-year graduation rate** also remained stable at about 52%, but the gap between low income students and other students has widened from no gap to 5.7 percentage points.

Part 2 Closing the Achievement Gap

UW-River Falls

- Enrollment of **underrepresented minorities (URM)** has remained stable at under 5.0%, and second year retention and graduation rates continue to lag behind non-underrepresented minorities (non-URM). **Second year retention** has declined, and the gap between URM and non-URM students has widened from 8.9 to 12.7 percentage points, although the gap in retention has been as high as 27.0 percentage points and as low as 4.2 percentage points. The gap in **six-year graduation rates** has increased from 26.4 to 27.1 percentage points over the same period of time. The percentage of **degrees conferred** to URM students increased from 3.3% in 2004-05 to 3.4% in 2008-09.

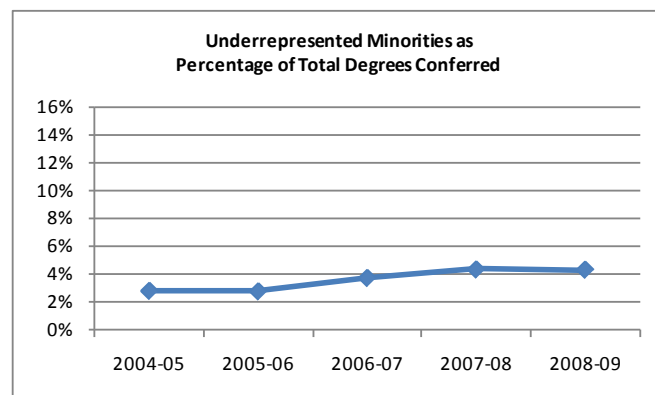
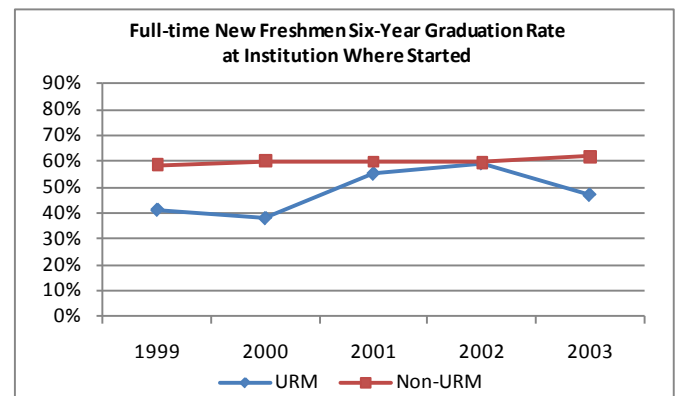
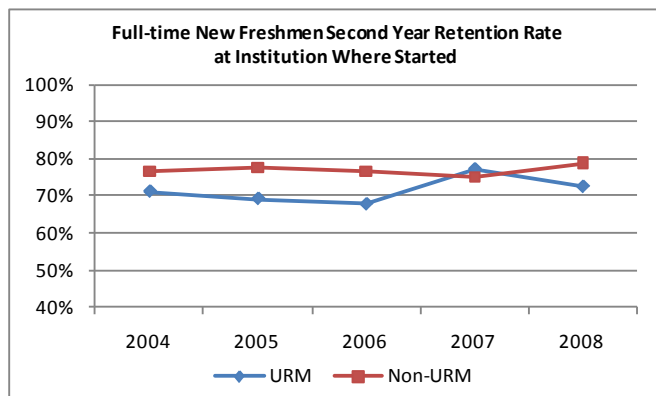
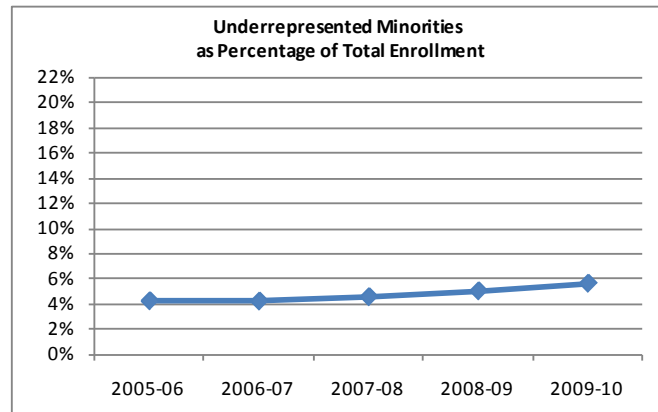


- The percentage of undergraduate enrollment that is **low income** remained around 23% over the last few years. **Second year retention** has declined, and the gap between low income students and other students has widened from no gap to 2.6 percentage points. The **six-year graduation rate** also declined, and the gap between low income students and other students has widened from 2.2 to 4.3 percentage points.

Part 2 Closing the Achievement Gap

UW-Stevens Point

- Enrollment of **underrepresented minorities (URM)** has increased to 5.6%. **Second year retention** has improved in recent years, but the gap between URM and non-underrepresented minorities (non-URM) has widened from 5.5 to 6.4 percentage points. The gap in **six-year graduation rates** declined from 17.2 to 14.7 percentage points, although it has been as high as 21.9 percentage points and as low as 0.3 percentage points. The percentage of **degrees conferred** to URM students increased from 2.8% in 2004-05 to 4.4% in 2008-09.

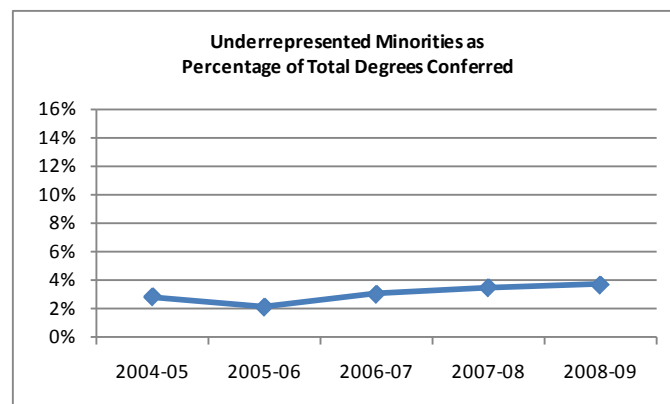
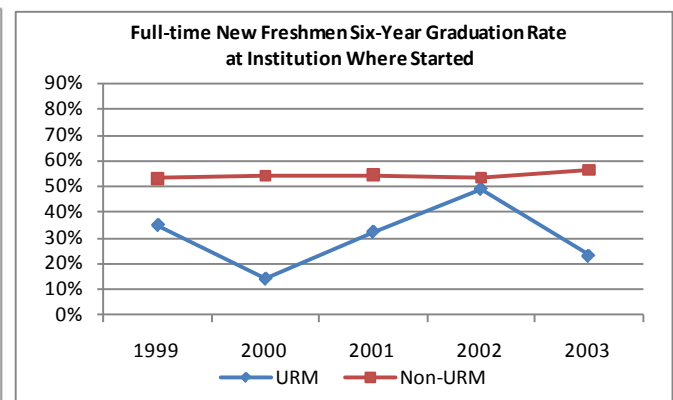
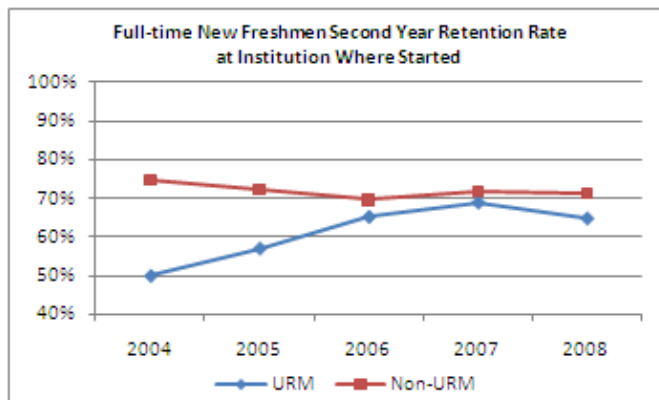
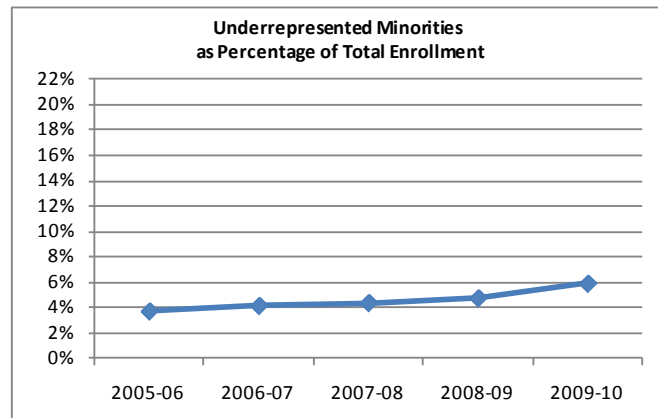


- The percentage of undergraduate enrollment that is **low income** has remained stable around 25% over the last few years. **The second year retention rate** of low income students has increased and there is no gap between low income students and other students as seen in the most recent available data. **The six-year graduation rate** has declined, and the gap between low income students and other students has widened from 5.1 to 11.2 percentage points.

Part 2 Closing the Achievement Gap

UW-Stout

- While enrollment of **underrepresented minorities (URM)** increased to 5.9%, second year retention and graduation rates continue to lag behind non-underrepresented minorities (non-URM). **Second year retention** has grown, and the gap between URM and non-URM students has decreased from 24.7 to 6.5 percentage points in recent years. The gap in **six-year graduation rates** increased from 18.2 to 33.3 percentage points in the most recent available data, although it has been as low as 4.4 points. The percentage of **degrees conferred** to URM students increased from 2.9% in 2004-05 to 3.7% in 2008-09.

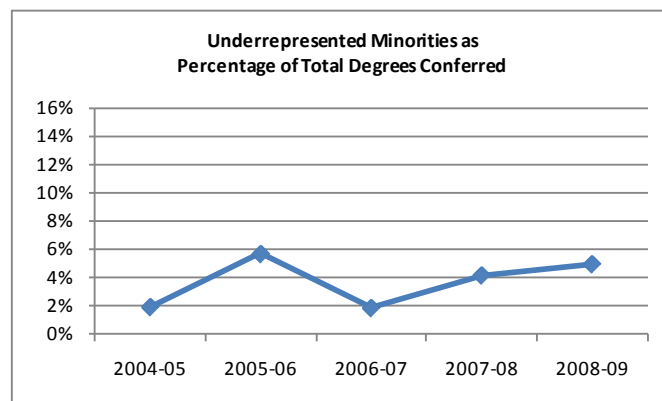
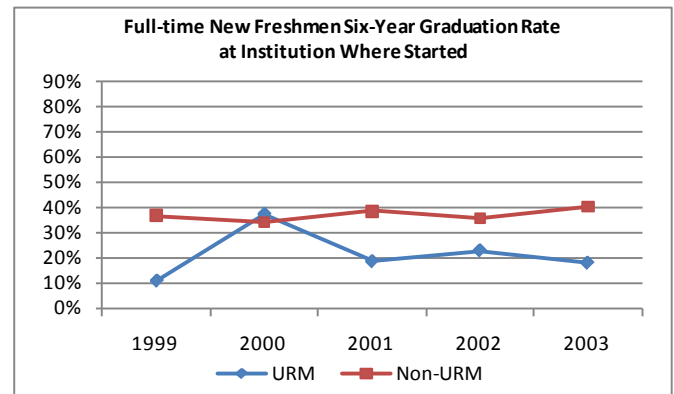
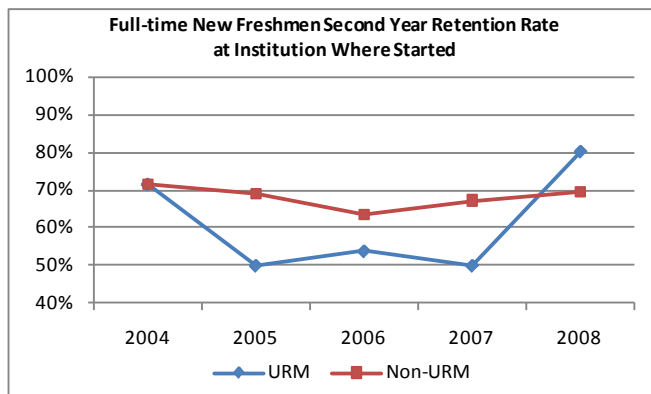
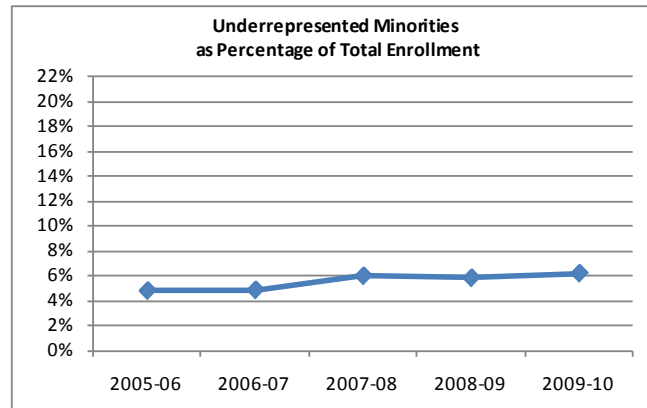


- The percentage of undergraduate enrollment that is **low income** has remained stable at just under 25%. **Second year retention** also remained stable, and the gap between low income students and other students has been around 5.0 percentage points as seen in the most recent available data. The **six-year graduation rate** has declined, and the gap between low income students and other students has widened from 5.5 to 13.8 percentage points.

Part 2 Closing the Achievement Gap

UW-Superior

- While enrollment of **underrepresented minorities (URM)** increased to 6.2%, second year retention and graduation rates continue to lag behind non-underrepresented minorities (non-URM). **Second year retention** has increased and the gap between URM and non-URM students has disappeared in the most recent available year, although the gap in retention rates fluctuated in previous years. **Graduation rates** for UW-Superior are unstable because of the small number of URM students graduating. In the most recent year available, the gap between URM and non-URM graduation rates was 22.5 percentage points. The percentage of **degrees conferred** to URM students increased from 2.0% in 2004-05 to 5.0% in 2008-09.

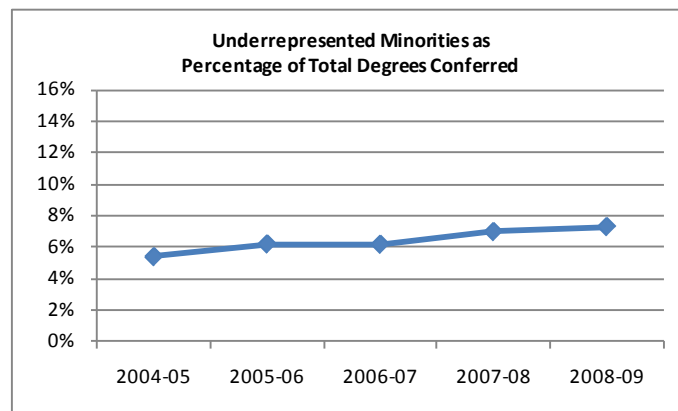
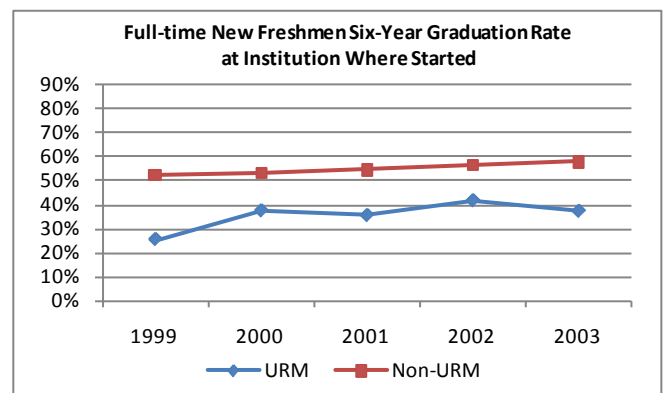
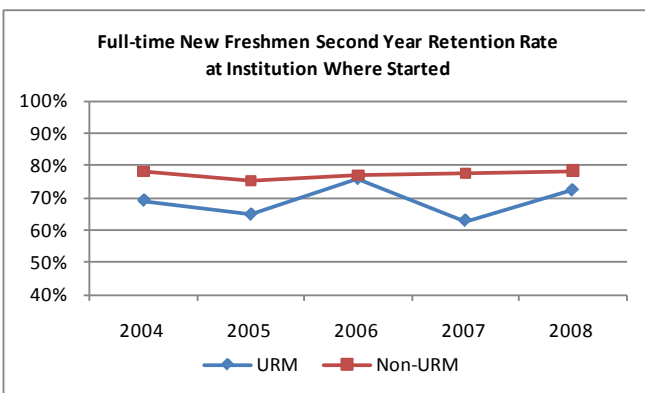
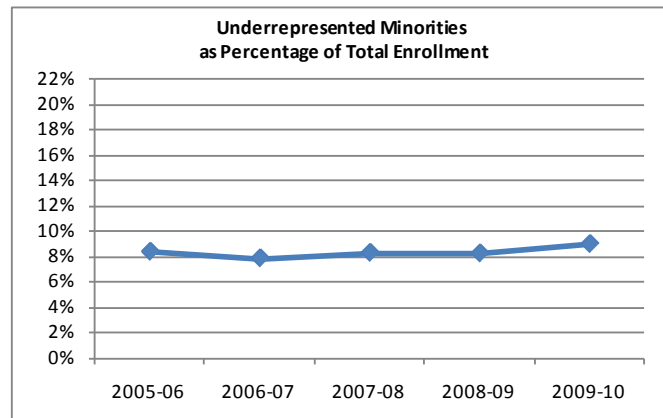


- The percentage of undergraduate enrollment that is **low income** has remained stable at under 40%. **Second year retention** is unstable due to the small enrollment at UW-Superior, but the gap between low income students and other students has disappeared in the two most recent years available. The **six-year graduation rate** has declined and the gap between low income students and other students has widened to 16.5 percentage points.

Part 2 Closing the Achievement Gap

UW-Whitewater

- While enrollment of **underrepresented minorities (URM)** increased to 10.2%, second year retention and graduation rates continue to lag behind non-underrepresented minorities (non-URM). **Second year retention** has grown, and the gap between URM and non-URM students has decreased from 8.9 percentage points to 6.1 points in recent years. The gap in **six-year graduation rates** narrowed from 26.9 to 20.5 percentage points in the most recent available data. The percentage of **degrees conferred** to URM students increased from 5.4% in 2004-05 to 7.3% in 2008-09.

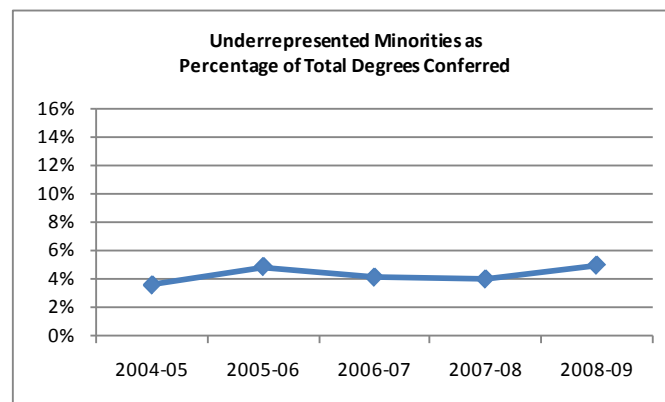
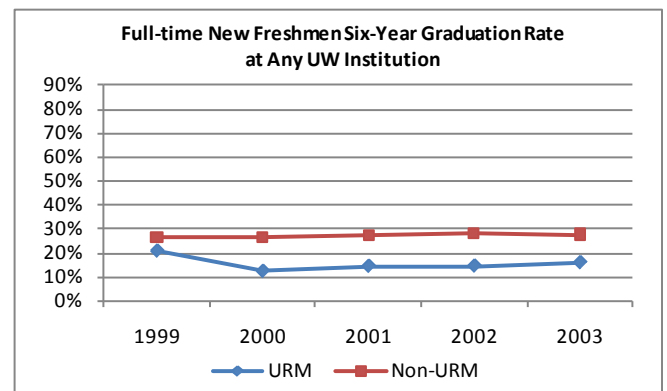
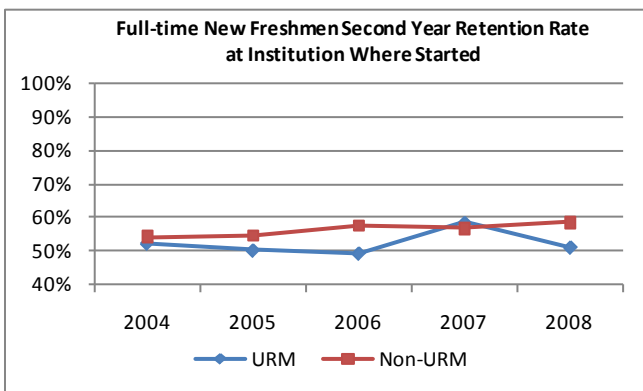
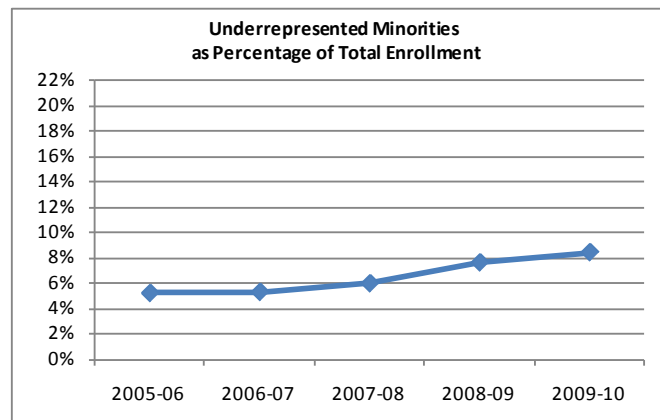


- The percentage of undergraduate enrollment that is **low income** has remained stable around 20%. **Second year retention** also remained stable, but the gap between low income students and other students has widened slightly from 0.6 percentage points to 1.7 points. The **six-year graduation rate** has increased, but the gap between low income students and other students has widened from 9.1 to 12.1 percentage points.

Part 2 Closing the Achievement Gap

UW Colleges

- While enrollment of **underrepresented minorities (URM)** increased to 8.4%, second year retention and graduation rates continue to lag behind non-underrepresented minorities (non-URM). **Second year retention** has declined, and the gap between URM and non-URM students has widened from 1.8 percentage points to 7.3 points in recent years. The gap **in six-year graduation rates** at any UW institution increased from 5.7 to 11.9 percentage points in the most recent available data. The percentage of **degrees conferred** to URM students increased from 3.6% in 2004-05 to 5.0% 2008-09.



- The percentage of undergraduate enrollment that is **low income** has remained stable at just under 25%. **Second year retention** grew, and the gap between low income students and other students narrowed from 3.3 to 2.1 percentage points as seen in the most recent available data. The **six-year graduation rate** has declined, and the gap between low income students and other students has widened from 2.5 to 3.4 percentage points.

Part 3 Leading Indicators

Leading indicators are metrics of student progress toward degree completion. The indicators included in this section -- beginning college level work, enrolling in 24 or more credits in the first year, completing remediation, and low rates of dropping courses -- are based on research commissioned by the National Association of System Heads and The Education Trust as part of the Access to Success Initiative. While these indicators have been associated with increased probability of student success, they may not be the most appropriate metrics for every student population.

Selected Indicators for New Freshmen Entering Full-Time in Fall 2003

UW		Entering Fall 2003 (#)	% Began College Level Math Within 1st Yr at Any UW	% Began College Level English Within 1st Yr at Any UW	% Attempted 24 or More Credits Within 1st Yr at Same UW	% Retained to 2nd Yr at Same UW
UW-Eau Claire	Overall	1,869	79.9%	83.3%	92.3%	81.3%
	URM	59	67.8%	88.1%	94.9%	76.3%
	Pell	322	80.4%	84.5%	92.5%	78.6%
UW-Green Bay	Overall	960	59.4%	82.1%	90.6%	74.9%
	URM	47	53.2%	72.3%	91.5%	72.3%
	Pell	196	55.6%	73.5%	90.3%	74.0%
UW-La Crosse	Overall	1,506	63.5%	79.4%	95.5%	86.5%
	URM	69	53.6%	95.7%	97.1%	87.0%
	Pell	233	63.5%	80.7%	94.4%	83.3%
UW-Madison	Overall	5,553	67.8%	47.1%	97.3%	92.9%
	URM	416	66.6%	49.5%	94.0%	89.9%
	Pell	618	70.4%	49.2%	96.4%	91.1%
UW-Milwaukee	Overall	3,716	65.8%	77.4%	85.0%	72.6%
	URM	495	43.8%	65.9%	65.5%	62.2%
	Pell	712	55.1%	69.4%	79.1%	70.1%
UW-Oshkosh	Overall	1,765	82.0%	82.6%	93.0%	76.4%
	URM	91	78.0%	83.5%	86.8%	62.6%
	Pell	336	81.0%	81.0%	91.4%	71.4%
UW-Parkside	Overall	863	56.0%	81.8%	83.7%	61.5%
	URM	135	30.4%	72.6%	83.0%	59.3%
	Pell	213	49.8%	79.3%	89.7%	64.3%
UW-Platteville	Overall	1,116	65.0%	94.7%	92.5%	77.4%
	URM	21	47.6%	95.2%	81.0%	57.1%
	Pell	278	54.3%	94.6%	94.2%	78.8%
UW-River Falls	Overall	1,220	67.6%	94.1%	92.8%	77.2%
	URM	80	70.0%	96.3%	86.3%	57.5%
	Pell	304	67.8%	93.8%	93.4%	77.0%
UW-Stevens Point	Overall	1,498	34.5%	94.9%	92.5%	79.5%
	URM	72	37.5%	94.4%	91.7%	79.2%
	Pell	345	36.8%	95.4%	91.3%	76.5%
UW-Stout	Overall	1,267	74.9%	90.8%	88.2%	73.4%
	URM	39	51.3%	74.4%	79.5%	53.8%
	Pell	271	71.2%	84.1%	87.8%	69.4%
UW-Superior	Overall	336	53.6%	86.3%	88.4%	67.0%
	URM	11	45.5%	72.7%	90.9%	72.7%
	Pell	112	55.4%	83.0%	89.3%	63.4%
UW-Whitewater	Overall	1,825	83.0%	96.7%	91.3%	76.9%
	URM	195	64.1%	89.7%	87.2%	72.3%
	Pell	351	74.4%	92.9%	92.6%	75.8%
UW System*	Overall	23,494	67.6%	76.7%	91.9%	80.2%
	URM	1,730	55.0%	71.4%	82.9%	71.8%
	Pell	4,291	63.4%	78.5%	90.3%	76.3%
UW Colleges*	Overall	3,784	81.6%	91.2%	80.2%	53.8%
	URM	119	69.7%	81.5%	70.6%	48.7%
	Pell	855	79.4%	90.1%	85.0%	55.7%

*UW System includes four-year institutions only. UW Colleges is reported separately from the UW System total to reflect UW Colleges' primary mission of transfer to four-year institutions.

Part 3

Leading Indicators

New Freshmen Needing and Completing Math Remediation

Fall 2005	Total New Freshmen	Need Math Rem	% of New Freshmen	Compl rem in 1st year	Cum. % Compl of Rem Req	Compl rem in 2nd year	Cum. % Compl of Rem Req	Compl rem in 3rd year	Cum. % Compl of Rem Req	Compl rem in 4th year	Cum. % Compl of Rem Req
UW-Eau Claire	2,069	197	9.5%	170	86.3%	4	88.3%	0	88.3%	0	88.3%
UW-Green Bay	925	149	16.1%	102	68.5%	6	72.5%	0	72.5%	0	72.5%
UW-La Crosse	1,758	63	3.6%	45	71.4%	3	76.2%	2	79.4%	0	79.4%
UW-Madison	6,141	63	1.0%	38	60.3%	8	73.0%	4	79.4%	4	85.7%
UW-Milwaukee	4,345	1,251	28.8%	785	62.7%	69	68.3%	22	70.0%	21	71.7%
UW-Oshkosh	1,638	163	10.0%	118	72.4%	5	75.5%	1	76.1%	1	76.7%
UW-Parkside	878	458	52.2%	176	38.4%	27	44.3%	18	48.3%	8	50.0%
UW-Platteville	1,246	575	46.1%	323	56.2%	36	62.4%	11	64.3%	2	64.7%
UW-River Falls	1,209	125	10.3%	51	40.8%	16	53.6%	7	59.2%	1	60.0%
UW-Stevens Point	1,534	141	9.2%	108	76.6%	12	85.1%	0	85.1%	0	85.1%
UW-Stout	1,708	92	5.4%	64	69.6%	3	72.8%	0	72.8%	0	72.8%
UW-Superior	346	140	40.5%	77	55.0%	8	60.7%	2	62.1%	2	63.6%
UW-Whitewater	1,712	343	20.0%	296	86.3%	4	87.5%	1	87.8%	3	88.6%
UW Colleges	4,126	1,270	30.8%	617	48.6%	59	53.2%	15	54.4%	4	54.7%
Total	29,635	5,030	17.0%	2,970	59.0%	260	64.2%	83	65.9%	46	66.8%

Fall 2006	Total New Freshmen	Need Math Rem	% of New Freshmen	Compl rem in 1st year	Cum. % Compl of Rem Req	Compl rem in 2nd year	Cum. % Compl of Rem Req	Compl rem in 3rd year	Cum. % Compl of Rem Req
UW-Eau Claire	2,026	181	8.9%	160	88.4%	3	90.1%	0	90.1%
UW-Green Bay	1,028	174	16.9%	134	77.0%	5	79.9%	1	80.5%
UW-La Crosse	1,752	70	4.0%	57	81.4%	3	85.7%	0	85.7%
UW-Madison	5,643	40	0.7%	15	37.5%	9	60.0%	2	65.0%
UW-Milwaukee	4,090	1,290	31.5%	824	63.9%	89	70.8%	32	73.3%
UW-Oshkosh	1,765	169	9.6%	114	67.5%	10	73.4%	4	75.7%
UW-Parkside	907	517	57.0%	186	36.0%	56	46.8%	18	50.3%
UW-Platteville	1,439	619	43.0%	320	51.7%	47	59.3%	10	60.9%
UW-River Falls	1,296	147	11.3%	63	42.9%	13	51.7%	4	54.4%
UW-Stevens Point	1,650	166	10.1%	136	81.9%	7	86.1%	1	86.7%
UW-Stout	1,516	84	5.5%	56	66.7%	3	70.2%	2	72.6%
UW-Superior	312	114	36.5%	66	57.9%	9	65.8%	0	65.8%
UW-Whitewater	1,805	342	18.9%	281	82.2%	13	86.0%	2	86.5%
UW Colleges	4,113	1,464	35.6%	691	47.2%	55	51.0%	13	51.8%
Total	29,342	5,377	18.3%	3,103	57.7%	322	63.7%	89	65.4%

Part 3

Leading Indicators

New Freshmen Needing and Completing Math Remediation

Fall 2007	Total New Freshmen	Need Math Rem	% of New Freshmen	Compl rem in 1st year	Cum. % Compl of Rem Req	Compl rem in 2nd year	Cum. % Compl of Rem Req
UW-Eau Claire	2,034	111	5.5%	93	83.8%	4	87.4%
UW-Green Bay	1,003	197	19.6%	148	75.1%	11	80.7%
UW-La Crosse	1,754	81	4.6%	61	75.3%	4	80.2%
UW-Madison	5,994	42	0.7%	26	61.9%	6	76.2%
UW-Milwaukee	4,598	1,771	38.5%	1117	63.1%	124	70.1%
UW-Oshkosh	1,760	627	35.6%	377	60.1%	66	70.7%
UW-Parkside	951	531	55.8%	268	50.5%	32	56.5%
UW-Platteville	1,546	595	38.5%	322	54.1%	27	58.7%
UW-River Falls	1,287	141	11.0%	83	58.9%	13	68.1%
UW-Stevens Point	1,624	152	9.4%	116	76.3%	10	82.9%
UW-Stout	1,498	99	6.6%	79	79.8%	1	80.8%
UW-Superior	350	124	35.4%	93	75.0%	4	78.2%
UW-Whitewater	2,063	428	20.7%	347	81.1%	18	85.3%
UW Colleges	4,190	1,626	38.8%	735	45.2%	57	48.7%
Total	30,652	6,525	21.3%	3,865	59.2%	377	65.0%

Fall 2008	Total New Freshmen	Need Math Rem	% of New Freshmen	Compl rem in 1st year	Cum. % Compl of Rem Req
UW-Eau Claire	2,059	100	4.9%	89	89.0%
UW-Green Bay	1,017	209	20.6%	155	74.2%
UW-La Crosse	1,785	82	4.6%	62	75.6%
UW-Madison	5,773	37	0.6%	19	51.4%
UW-Milwaukee	4,118	1,553	37.7%	1038	66.8%
UW-Oshkosh	1,843	803	43.6%	460	57.3%
UW-Parkside	929	528	56.8%	288	54.5%
UW-Platteville	1,554	599	38.5%	258	43.1%
UW-River Falls	1,345	97	7.2%	64	66.0%
UW-Stevens Point	1,632	145	8.9%	113	77.9%
UW-Stout	1,644	220	13.4%	194	88.2%
UW-Superior	312	122	39.1%	87	71.3%
UW-Whitewater	2,154	437	20.3%	415	95.0%
UW Colleges	4,164	1,615	38.8%	740	45.8%
Total	30,329	6,547	21.6%	3,982	60.8%

Note: Remediation completed by Summer 2009 is included in the tables.

New Freshmen Needing and Completing English Remediation

Fall 2005	Total New Freshmen	Need Engl Rem	% of New Freshmen	Compl rem in 1st year	Cum. % Compl of Rem Req	Compl rem in 2nd year	Cum. % Compl of Rem Req	Compl rem in 3rd year	Cum. % Compl of Rem Req	Compl rem in 4th year	Cum. % Compl of Rem Req
UW-Eau Claire	2,069	13	0.6%	12	92.3%	0	92.3%	0	92.3%	0	92.3%
UW-Green Bay	925	61	6.6%	57	93.4%	0	93.4%	0	93.4%	0	93.4%
UW-La Crosse	1,758	34	1.9%	19	55.9%	2	61.8%	1	64.7%	0	64.7%
UW-Madison	6,141	0	0.0%	0	0.0%	0	0.0%	0	0.0%	0	0.0%
UW-Milwaukee	4,345	791	18.2%	621	78.5%	25	81.7%	4	82.2%	6	82.9%
UW-Oshkosh	1,638	42	2.6%	23	54.8%	0	54.8%	0	54.8%	1	57.1%
UW-Parkside	878	348	39.6%	248	71.3%	8	73.6%	0	73.6%	0	73.6%
UW-Platteville	1,246	59	4.7%	41	69.5%	3	74.6%	0	74.6%	0	74.6%
UW-River Falls	1,209	29	2.4%	24	82.8%	1	86.2%	0	86.2%	0	86.2%
UW-Stevens Point	1,534	*	*	*	*	*	*	*	*	*	*
UW-Stout	1,708	326	19.1%	254	77.9%	12	3.7%	2	82.2%	0	82.2%
UW-Superior	346	79	22.8%	48	60.8%	1	1.3%	0	62.0%	0	62.0%
UW-Whitewater	1,712	139	8.1%	132	95.0%	1	0.7%	0	95.7%	0	95.7%
UW Colleges	4,126	395	9.6%	225	57.0%	5	1.3%	2	58.7%	2	59.2%
Total	29,635	2,316	7.8%	1,704	73.6%	58	2.5%	9	76.5%	9	76.9%

Fall 2006	Total New Freshmen	Need Engl Rem	% of New Freshmen	Compl rem in 1st year	Cum. % Compl of Rem Req	Compl rem in 2nd year	Cum. % Compl of Rem Req	Compl rem in 3rd year	Cum. % Compl of Rem Req
UW-Eau Claire	2,026	14	0.7%	13	92.9%	0	92.9%	0	92.9%
UW-Green Bay	1,028	87	8.5%	79	90.8%	0	90.8%	0	90.8%
UW-La Crosse	1,752	15	0.9%	6	40.0%	2	53.3%	0	53.3%
UW-Madison	5,643	0	0.0%	0	0.0%	0	0.0%	0	0.0%
UW-Milwaukee	4,090	602	14.7%	491	81.6%	12	83.6%	6	84.6%
UW-Oshkosh	1,765	25	1.4%	15	60.0%	0	60.0%	0	60.0%
UW-Parkside	907	389	42.9%	282	72.5%	4	73.5%	2	74.0%
UW-Platteville	1,439	59	4.1%	37	62.7%	1	64.4%	0	64.4%
UW-River Falls	1,296	19	1.5%	13	68.4%	3	84.2%	0	84.2%
UW-Stevens Point	1,650	*	*	*	*	*	*	*	*
UW-Stout	1,516	193	12.7%	154	79.8%	4	81.9%	2	82.9%
UW-Superior	312	54	17.3%	40	74.1%	1	75.9%	1	77.8%
UW-Whitewater	1,805	133	7.4%	133	100.0%	0	100.0%	0	100.0%
UW Colleges	4,113	301	7.3%	140	46.5%	5	48.2%	3	49.2%
Total	29,342	1,891	6.4%	1,403	74.2%	32	75.9%	14	76.6%

New Freshmen Needing and Completing English Remediation

Fall 2007	Total New Freshmen	Need Engl Rem	% of New Freshmen	Compl rem in 1st year	Cum. % Compl of Rem Req	Compl rem in 2nd year	Cum. % Compl of Rem Req
UW-Eau Claire	2,034	15	0.7%	12	80.0%	1	86.7%
UW-Green Bay	1,003	83	8.3%	78	94.0%	0	94.0%
UW-La Crosse	1,754	26	1.5%	4	15.4%	2	23.1%
UW-Madison	5,994	0	0.0%	0	0.0%	0	0.0%
UW-Milwaukee	4,598	713	15.5%	585	82.0%	17	84.4%
UW-Oshkosh	1,760	35	2.0%	23	65.7%	1	68.6%
UW-Parkside	951	378	39.7%	260	68.8%	8	70.9%
UW-Platteville	1,546	80	5.2%	56	70.0%	2	72.5%
UW-River Falls	1,287	98	7.6%	84	85.7%	2	87.8%
UW-Stevens Point	1,624	*	*	*	*	*	*
UW-Stout	1,498	124	8.3%	96	77.4%	4	80.6%
UW-Superior	350	68	19.4%	54	79.4%	2	82.4%
UW-Whitewater	2,063	145	7.0%	143	98.6%	1	99.3%
UW Colleges	4,190	297	7.1%	159	53.5%	2	54.2%
Total	30,652	2,062	6.7%	1,554	75.4%	42	77.4%

Fall 2008	Total New Freshmen	Need Engl Rem	% of New Freshmen	Compl rem in 1st year	Cum. % Compl of Rem Req
UW-Eau Claire	2,059	22	1.1%	22	100.0%
UW-Green Bay	1,017	83	8.2%	78	94.0%
UW-La Crosse	1,785	42	2.4%	22	52.4%
UW-Madison	5,773	0	0.0%	0	0.0%
UW-Milwaukee	4,118	713	17.3%	614	86.1%
UW-Oshkosh	1,843	67	3.6%	35	52.2%
UW-Parkside	929	397	42.7%	291	73.3%
UW-Platteville	1,554	130	8.4%	85	65.4%
UW-River Falls	1,345	104	7.7%	88	84.6%
UW-Stevens Point	1,632	*	*	*	*
UW-Stout	1,644	290	17.6%	208	71.7%
UW-Superior	312	52	16.7%	44	84.6%
UW-Whitewater	2,154	159	7.4%	150	94.3%
UW Colleges	4,164	453	10.9%	223	49.2%
Total	30,329	2,512	8.3%	1,860	74.0%

Note: Remediation completed by Summer 2009 is included in the tables.

*UW-Stevens Point does not offer remedial English courses.

Part 3

Leading Indicators

Annual Course Drop Rates for Undergraduates

	Percent of Total Credits Dropped (Fall and Spring of Calendar Year)					
	2003	2004	2005	2006	2007	2008
UW-Madison	3.8%	3.9%	3.8%	4.1%	4.0%	3.8%
UW-Milwaukee	3.8%	4.0%	3.5%	3.3%	3.9%	3.1%
UW-Eau Claire	2.9%	2.6%	2.2%	3.7%	2.3%	2.1%
UW-Green Bay	1.0%	1.8%	1.7%	1.9%	2.0%	2.3%
UW-La Crosse	2.1%	1.8%	2.0%	2.2%	2.7%	2.2%
UW-Oshkosh	3.3%	4.4%	5.0%	5.2%	5.2%	4.4%
UW-Parkside	4.3%	4.0%	4.8%	3.1%	4.2%	2.5%
UW-Platteville	2.5%	3.2%	1.8%	2.4%	2.5%	2.3%
UW-River Falls	0.7%	0.6%	2.1%	2.3%	1.6%	2.6%
UW-Stevens Point	2.2%	2.0%	3.2%	3.5%	3.5%	3.1%
UW-Stout	2.3%	2.2%	2.5%	2.5%	2.4%	1.9%
UW-Superior	2.9%	2.1%	3.8%	3.6%	3.8%	3.7%
UW-Whitewater	0.9%	0.9%	4.4%	2.5%	2.2%	2.1%
UW Colleges	6.6%	6.5%	6.2%	6.7%	6.9%	6.9%
UW System	3.1%	3.2%	3.5%	3.6%	3.6%	3.3%

Note: UW-Platteville does not include extended degree credits.